

# Recombinant Human Glutathione S-transferase Omega 1

Cat. No. GSTO1-498H Lot. No. (See product label)

## SPECIFICATION

<b>Product Overview</b>	Recombinant human GSTO1 protein was expressed in <i>E.coli</i> and purified by using conventional chromatography techniques, 27.5 kDa (241aa).
<b>Species</b>	Human
<b>Source</b>	<i>E.coli</i>
<b>Description</b>	GSTO1, also known as p28 or GSTTLp28, is a protein that localizes to the cytoplasm and contains both an N-terminal and a C-terminal GST domain. In mouse, the encoded protein acts as a small stress response protein, likely involved in cellular redox homeostasis. This protein has dehydroascorbate reductase activity and may function in the glutathione-ascorbate cycle as part of antioxidant metabolism.
<b>Sequences Of Amino Acids</b>	MSGESARSLG KGSAPPGPVP EGSIRIYSMR FCPFAERTRL VLKAKGIRHE VININLKNKP EWFFKKNPFG LVPVLENSQG QLIYESAITC EYLDEAYPGK KLLPDDPYEK ACQKMILELF SKVPSLVGSF IRSQNKEDYA GLKEEFRKEF TKLEEVLTKN KTTFFGGNSI SMIDYLIWPW FERLEAMKLN ECVDHTPKLK LWMAAMKEDP TVSALLTSEK DWQGFLELYL QNSPEACDYG L.
<b>Formulation</b>	Liquid. In 20 mM Tris-HCl buffer (pH8.0) containing 1mM DTT and 10% glycerol.
<b>Purity</b>	> 95% by SDS – PAGE.
<b>Concentration</b>	1 mg/ml (determined by Bradford assay).

 Tel: 1-631-559-9269 1-516-512-3133

 Email: [info@creative-biomart.com](mailto:info@creative-biomart.com)  Fax: 1-631-938-8127

 45-1 Ramsey Road, Shirley, NY 11967, USA

**Storage** Can be stored at +4°C short term (1-2 weeks). For long term storage, aliquot and store at -20°C or -70°C. Avoid repeated freezing and thawing cycles.

**Pathways** Drug metabolism - cytochrome P450; Glutathione metabolism; Metabolism of xenobiotics by cytochrome P450; Biological oxidations; Metabolism of vitamins and cofactors

## GENE INFORMATION

**Gene Name** [GSTO1 glutathione S-transferase omega 1 \[ Homo sapiens \]](#)

**Synonyms** P28; GSTTLp28; DKFZp686H13163; GSTO1; glutathione S-transferase omega 1; glutathione S-transferase omega-1; GSTO-1; glutathione-S-transferase like; glutathione transferase omega 1; glutathione S-transferase omega 1-1; GSTO 1-1; glutathione-S-transferase omega 1; EC 2.5.1.18; GSTTLP28

**Gene ID** [9446](#)

**mRNA Refseq** [NM\\_004832](#)

**Protein Refseq** [NP\\_004823](#)

**MIM** [605482](#)

**UniProt ID** [P78417](#)

**Chromosome Location** 10q25.1

**Function** glutathione transferase activity; monodehydroascorbate reductase (NADH) activity; transferase activity

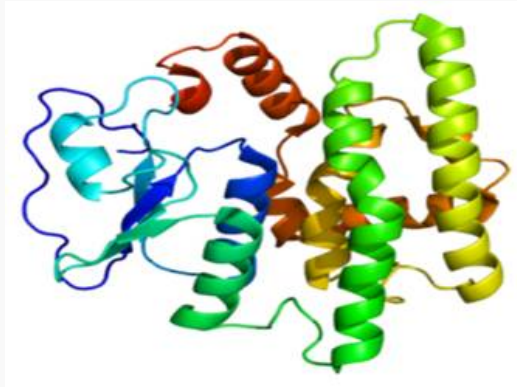
 Tel: 1-631-559-9269 1-516-512-3133

 Email: [info@creative-biomart.com](mailto:info@creative-biomart.com)  Fax: 1-631-938-8127

 45-1 Ramsey Road, Shirley, NY 11967, USA



PDB rendering based  
on 1eem



Tel: 1-631-559-9269 1-516-512-3133

Email: [info@creative-biomart.com](mailto:info@creative-biomart.com) Fax: 1-631-938-8127

45-1 Ramsey Road, Shirley, NY 11967, USA