

Recombinant Human GSTO2 Protein, Myc/DDK-tagged, C13 and N15-labeled

Cat. No. GSTO2-3229H Lot. No. (See product label)

SPECIFICATION

Product Overview	GSTO2 MS Standard C13 and N15-labeled recombinant protein (NP_899062) with a C-terminal MYC/DDK tag, was expressed in HEK293 cells.
Species	Human
Source	HEK293
Description	The protein encoded by this gene is an omega class glutathione S-transferase (GST). GSTs are involved in the metabolism of xenobiotics and carcinogens. Four transcript variants encoding different isoforms have been found for this gene.
Molecular Mass	28.3 kDa
AA Sequence	MSGDATRTLKGKGSQPPGPVPEGLIRIYSMRFCPYSHRTRLVLKAKDIRHEVVNINLR NKPEWYYTKHPFGHIPVLETSQCQLIYESVIACEYLDDAYPGRKLFYDPYERARQK MLLELFCKVPHLTKECLVALRCGRECTNLKAALRQEFNSNLEEILEYQNTTFFGGTCIS MIDYLLWPWFERLDVYGILDCVSHTPALRLWISAMKWDPTVCALLMDKSIFQGFLNL YFQNNPNAFDGFLCTRTRPLEQKLISEEDLAANDILDYKDDDDKV
Purity	> 80% as determined by SDS-PAGE and Coomassie blue staining
Stability	Stable for 3 months from receipt of products under proper storage and handling conditions.

 Tel: 1-631-559-9269 1-516-512-3133

 Email: info@creative-biomart.com  Fax: 1-631-938-8127

 45-1 Ramsey Road, Shirley, NY 11967, USA

Storage	Store at -80 centigrade. Avoid repeated freeze-thaw cycles.
Concentration	50 µg/mL as determined by BCA
Storage Buffer	100 mM glycine, 25 mM Tris-HCl, pH 7.3.
GENE INFORMATION	
Gene Name	GSTO2 glutathione S-transferase omega 2 [Homo sapiens (human)]
Official Symbol	GSTO2
Synonyms	GSTO2; glutathione S-transferase omega 2; glutathione S-transferase omega-2; GSTO-2; MMA(V) reductase; monomethylarsonic acid reductase; glutathione S-transferase omega 2-2; glutathione-S-transferase-like protein; bA127L20.1 (novel glutathione-S-transferase); glutathione-dependent dehydroascorbate reductase; GSTO 2-2; bA127L20.1;
Gene ID	119391
mRNA Refseq	NM_183239
Protein Refseq	NP_899062
MIM	612314
UniProt ID	Q9H4Y5

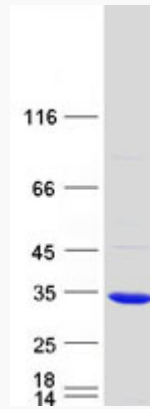
 Tel: 1-631-559-9269 1-516-512-3133

 Email: info@creative-biomart.com  Fax: 1-631-938-8127

 45-1 Ramsey Road, Shirley, NY 11967, USA



SDS-PAGE



Tel: 1-631-559-9269 1-516-512-3133

Email: info@creative-biomart.com Fax: 1-631-938-8127

45-1 Ramsey Road, Shirley, NY 11967, USA