

Recombinant Mouse GSTP1 Protein (2-210 aa), His-tagged

Cat. No. GSTP1-1406M Lot. No. (See product label)

SPECIFICATION

Product Overview	Recombinant Mouse GSTP1 Protein (2-210 aa) is produced by Yeast expression system. This protein is fused with a 6xHis tag at the N-terminal. Protein Description: Full Length of Mature Protein.
Species	Mouse
Source	Yeast
ProteinLength	2-210 aa
Description	Conjugation of reduced glutathione to a wide number of exogenous and endogenous hydrophobic electrophiles. Can metabolize 1-chloro-2,4-dinitrobenzene. Regulates negatively CDK5 activity via p25/p35 translocation to prevent neurodegeneration.
Form	Tris-based buffer,50% glycerol
Molecular Mass	25.5 kDa
AA Sequence	PPYTIVYFPVRGRCEAMRMLLADQGQSWKEEVVTIDTWMQGLLKPTCLYGQLPKFE DGDLTLYQSNAILRHLGRSLGLYGKNQREAAQMDMVNDGVEDLRGKYVTLIYTNYE NGKNDYVKALPGHLKPFETLLSQNQGGKAFIVGDQISFADYNLLDLLLIHQVLAPGCL DNFPLLSAYVARLSARPKIKAFLLSSPEHVNRPINGNGKQ
Purity	> 90% as determined by SDS-PAGE.

 Tel: 1-631-559-9269 1-516-512-3133

 Email: info@creative-biomart.com  Fax: 1-631-938-8127

 45-1 Ramsey Road, Shirley, NY 11967, USA

Notes	Repeated freezing and thawing is not recommended. Store working aliquots at 4 centigrade for up to one week.
Storage	The shelf life is related to many factors, storage state, buffer ingredients, storage temperature and the stability of the protein itself. Generally, the shelf life of liquid form is 6 months at -20 centigrade/-80 centigrade. The shelf life of lyophilized form is 12 months at -20 centigrade/-80 centigrade.
Concentration	A hardcopy of COA with reconstitution instruction is sent along with the products.

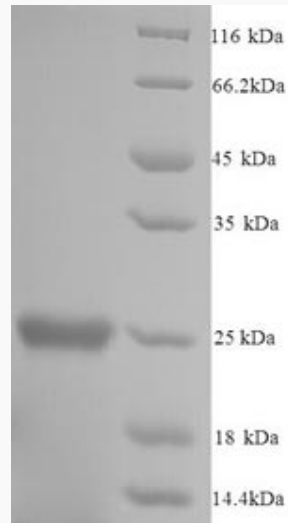
GENE INFORMATION

Gene Name	Gstp1 glutathione S-transferase, pi 1 [Mus musculus]
Official Symbol	GSTP1
Synonyms	GSTP1; gst P1; GST-piB; Gst p-1; GST YF-YF; GST class-pi; Gstp1B;
Gene ID	14870
mRNA Refseq	NM_013541
Protein Refseq	NP_038569
UniProt ID	P19157

 Tel: 1-631-559-9269 1-516-512-3133

 Email: info@creative-biomart.com  Fax: 1-631-938-8127

 45-1 Ramsey Road, Shirley, NY 11967, USA



(Tris-Glycine gel) Discontinuous SDS-PAGE (reduced) with 5% enrichment gel and 15% separation gel.

 Tel: 1-631-559-9269 1-516-512-3133

 Email: info@creative-biomart.com  Fax: 1-631-938-8127

 45-1 Ramsey Road, Shirley, NY 11967, USA