

## Recombinant Human GSTP1 protein(2-210aa), 6xHis-tagged

Cat. No. GSTP1-3001H Lot. No. (See product label)

### SPECIFICATION

<b>Product Overview</b>	Recombinant Human GSTP1 protein(2-210aa)(P09211), fused with N-terminal 6xHis tag, was expressed in E. coli.
<b>Species</b>	Human
<b>Source</b>	E.coli
<b>ProteinLength</b>	2-210aa
<b>Form</b>	<p>If the delivery form is liquid, the default storage buffer is Tris/PBS-based buffer, 5%-50% glycerol.</p> <p>If the delivery form is lyophilized powder, the buffer before lyophilization is Tris/PBS-based buffer, 6% Trehalose, pH 8.0.</p>
<b>Molecular Mass</b>	27.2kDa
<b>Purity</b>	Greater than 90% as determined by SDS-PAGE.
<b>Storage</b>	Store at -20°C/-80°C upon receipt, aliquoting is necessary for mutiple use. Avoid repeated freeze-thaw cycles.
<b>Reconstitution</b>	We recommend that this vial be briefly centrifuged prior to opening to bring the contents to the bottom. Please reconstitute protein in deionized sterile water to a concentration of 0.1-1.0 mg/mL. We recommend to add 5-50% of glycerol (final concentration) and aliquot for long-term storage at -20°C/-80°C.

 Tel: 1-631-559-9269 1-516-512-3133

 Email: [info@creative-biomart.com](mailto:info@creative-biomart.com)  Fax: 1-631-938-8127

 45-1 Ramsey Road, Shirley, NY 11967, USA

**AA Sequence**

PPYTVVYFPVRGRCAALRMLLADQGQSWKEEVTVETWQEGSLKASCLYGQLPKF  
 QDGDLTLYQSNTILRHGRTLGLYGKDQQEAALVDMVNDGVEDLRCKYISLIYTNYE  
 AGKDDYVKALPGQLKPFETLLSQNQGGKTFIVGDQISFADYNLLDLLLIHEVLAPGCL  
 DAFPLLSAYVGRLSARPKLKAFLASPEYVNLPIPINGNKQ

**GENE INFORMATION**

**Gene Name** [GSTP1 glutathione S-transferase pi 1 \[ Homo sapiens \]](#)

**Official Symbol** [GSTP1](#)

**Synonyms** GSTP1; glutathione S-transferase pi 1; FAEES3, GST3; glutathione S-transferase P; GSTP; GSTP1-1; GST class-pi; deafness, X-linked 7; fatty acid ethyl ester synthase III; PI; DFN7; GST3; FAEES3

**Gene ID** [2950](#)

**mRNA Refseq** [NM\\_000852](#)

**Protein Refseq** [NP\\_000843](#)

**MIM** [134660](#)

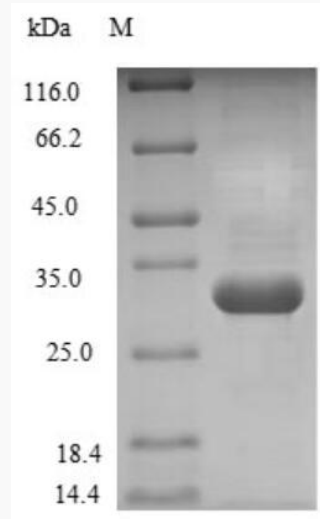
**UniProt ID** [P09211](#)

 Tel: 1-631-559-9269 1-516-512-3133

 Email: [info@creative-biomart.com](mailto:info@creative-biomart.com)  Fax: 1-631-938-8127

 45-1 Ramsey Road, Shirley, NY 11967, USA

**SDS-PAGE**



 Tel: 1-631-559-9269 1-516-512-3133

 Email: [info@creative-biomart.com](mailto:info@creative-biomart.com)  Fax: 1-631-938-8127

 45-1 Ramsey Road, Shirley, NY 11967, USA