

Recombinant Human Glutathione S-transferase Theta 1

Cat. No. GSTT1-2476H Lot. No. (See product label)

SPECIFICATION

Product Overview	Recombinant Human GST T1 was expressed in <i>E. coli</i> . MW= 25 kDa.
Species	Human
Source	<i>E. coli</i>
Description	Glutathione S-transferase theta 1 (GSTT1) is one of the GSTs' four main classes: alpha, mu, pi, theta. This enzyme is involved in activation and detoxification reactions and catalyzes the conjugation of industrial chemicals, e.g. epoxybutane, ethylene oxides, halomethane with glutathione. The absence of the GSTT1 enzyme, might determine the individual risk for development of acquired aplastic anemia and acute myeloid leukemia.
Specific Activity	29.4 Units/mg using spectrophotometric determination of 4-nitrobenzyl chloride conjugation with reduced glutathione (5 mM) in 100 mM NaPO ₄ (pH 6.5) at room temperature.
Concentration	2.5 mg/mL total protein using the Bradford protein assay with BSA as a standard.
Storage Buffer	50 mM Tris-HCl (pH 7.5), 50 mM NaCl, 1 mM DTT, 5 mM EDTA and 50% glycerol.
Purity	≥95% as assessed by inspection on a Coomassie [®] Blue-stained SDS-PAGE gel.
Storage	-20°C; avoid multiple freeze-thaw cycles.

 Tel: 1-631-559-9269 1-516-512-3133

 Email: info@creative-biomart.com  Fax: 1-631-938-8127

 45-1 Ramsey Road, Shirley, NY 11967, USA

GENE INFORMATION

Gene Name	GSTT1 glutathione S-transferase theta 1 [Homo sapiens]
Synonyms	GSTT1; glutathione S-transferase theta 1; EC 2.5.1.18; Glutathione S-transferase theta-1; GST class-theta-1; Glutathione transferase T1-1
Gene ID	2952
mRNA Refseq	NM_000853
Protein Refseq	NP_000844
MIM	600436
UniProt ID	P30711
Chromosome Location	22q11.23
Pathway	Drug metabolism - cytochrome P450; Glutathione metabolism; Metabolism of xenobiotics by cytochrome P450
Function	glutathione transferase activity; transferase activity

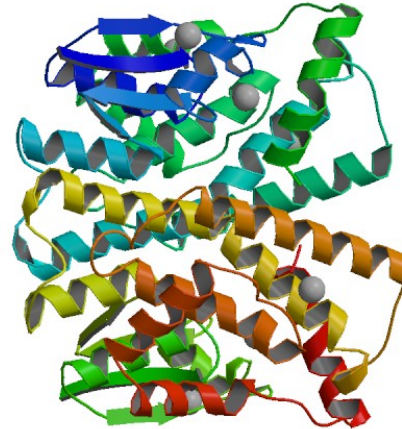
 Tel: 1-631-559-9269 1-516-512-3133

 Email: info@creative-biomart.com  Fax: 1-631-938-8127

 45-1 Ramsey Road, Shirley, NY 11967, USA



PDB rendering based
on 2c3n.



☎ Tel: 1-631-559-9269 1-516-512-3133

☎ Email: info@creative-biomart.com ☎ Fax: 1-631-938-8127

☎ 45-1 Ramsey Road, Shirley, NY 11967, USA