

Recombinant Human GSX2 Protein, GST-tagged

Cat. No. GSX2-4396H Lot. No. (See product label)

SPECIFICATION

Product Overview	Human GSH2 partial ORF (NP_573574, 1 a.a. - 70 a.a.) recombinant protein with GST-tag at N-terminal.
Species	Human
Source	Wheat Germ
Description	GSX2 (GS Homeobox 2) is a Protein Coding gene. GO annotations related to this gene include sequence-specific DNA binding. An important paralog of this gene is GSX1.
Molecular Mass	33.44 kDa
AA Sequence	MSRSFYVDSLIIKDTSRPAPSLPEPHPGPDFFIPLGMPPPLVMSVSGPGCPSRKSGA FCVCPLCVTSHLH
Applications	Enzyme-linked Immunoabsorbent Assay Western Blot (Recombinant protein) Antibody Production Protein Array
Notes	Best use within three months from the date of receipt of this protein.
Storage	Store at -8 centigrade. Aliquot to avoid repeated freezing and thawing.

 Tel: 1-631-559-9269 1-516-512-3133

 Email: info@creative-biomart.com  Fax: 1-631-938-8127

 45-1 Ramsey Road, Shirley, NY 11967, USA

Storage Buffer 50 mM Tris-HCl, 10 mM reduced Glutathione, pH=8.0 in the elution buffer.

GENE INFORMATION

Gene Name GSX2 GS homeobox 2 [Homo sapiens]

Official Symbol GSX2

Synonyms GSX2; GS homeobox 2; Gsh2; homeobox protein GSH-2; GSH2;

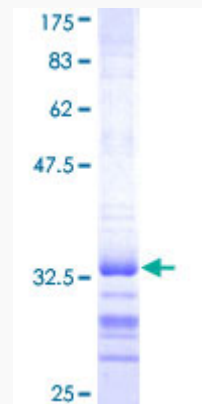
Gene ID 170825

mRNA Refseq NM_133267

Protein Refseq NP_573574

UniProt ID Q9BZM3

**Quality Control
Testing**



12.5% SDS-PAGE Stained with Coomassie Blue.

 Tel: 1-631-559-9269 1-516-512-3133

 Email: info@creative-biomart.com  Fax: 1-631-938-8127

 45-1 Ramsey Road, Shirley, NY 11967, USA