

Recombinant Human GTDC1 Protein, Myc/DDK-tagged, C13 and N15-labeled

Cat. No. GTDC1-3579H **Lot. No.** (See product label)

SPECIFICATION

Product Overview	GTDC1 MS Standard C13 and N15-labeled recombinant protein (NP_078935) with a C-terminal MYC/DDK tag, was expressed in HEK293 cells.
Species	Human
Source	HEK293
Description	GTDC1 (Glycosyltransferase Like Domain Containing 1) is a Protein Coding gene. Diseases associated with GTDC1 include Epilepsy, Idiopathic Generalized 9 and Meier-Gorlin Syndrome 2. Gene Ontology (GO) annotations related to this gene include transferase activity, transferring glycosyl groups and transferase activity.
Molecular Mass	43 kDa
AA Sequence	MSILIIIEAFYGGSHKQLVDLLQEELGDCVVYTLPAKKWHWRARTSALYFSQTIPISEH YRTLFASSVLNLTALAALRPDLGKLLKILYFHENQLIYPVKKCQERDFQYGYNQILSCL VADVVFNSVFNMESFLTSMGKFMKLIPDHRPKDLESIIRPKCQVIYFPIRFPDVSFRF MPKHKTTHLKKMLGLKGNNGGAVLSMALPFQPEQRDSEDLKFNSECDTHCGLDT ARQEYLGNSLRQESDLKKSTSSDNSSSHHGENKQNLTVDPDILGGVDNQQRLLHI VWPHRWLEAVYCGCYPLCPKDLVYPEIFPAEYLYSTPEQLSKRLQNFCKRPDIIRKH LYKGEIAPFSWAALHGKFRSLLTTEPREDLTRTRPLEQKLISEEDLAANDILDYKDDD DKV
Purity	> 80% as determined by SDS-PAGE and Coomassie blue staining

 Tel: 1-631-559-9269 1-516-512-3133

 Email: info@creative-biomart.com  Fax: 1-631-938-8127

 45-1 Ramsey Road, Shirley, NY 11967, USA

Stability	Stable for 3 months from receipt of products under proper storage and handling conditions.
Storage	Store at -80 centigrade. Avoid repeated freeze-thaw cycles.
Concentration	50 µg/mL as determined by BCA
Storage Buffer	100 mM glycine, 25 mM Tris-HCl, pH 7.3.

GENE INFORMATION

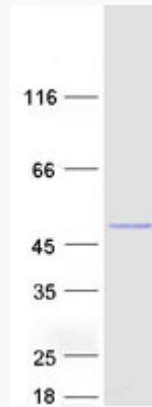
Gene Name	GTDC1 glycosyltransferase-like domain containing 1 [Homo sapiens (human)]
Official Symbol	GTDC1
Synonyms	GTDC1; glycosyltransferase-like domain containing 1; glycosyltransferase-like domain-containing protein 1; FLJ11753; glycosyltransferase-like 1; mannosyltransferase candidate; mat-Xa; Hmat-Xa; FLJ44822;
Gene ID	79712
mRNA Refseq	NM_024659
Protein Refseq	NP_078935
MIM	610165
UniProt ID	Q4AE62

 Tel: 1-631-559-9269 1-516-512-3133

 Email: info@creative-biomart.com  Fax: 1-631-938-8127

 45-1 Ramsey Road, Shirley, NY 11967, USA

SDS-PAGE



 Tel: 1-631-559-9269 1-516-512-3133

 Email: info@creative-biomart.com  Fax: 1-631-938-8127

 45-1 Ramsey Road, Shirley, NY 11967, USA