

Recombinant Human GTDC1 Protein, GST-tagged

Cat. No. GTDC1-4436H **Lot. No.** (See product label)

SPECIFICATION

Product Overview	Human GTDC1 full-length ORF (NP_078935.2, 1 a.a. - 373 a.a.) recombinant protein with GST-tag at N-terminal.
Species	Human
Source	Wheat Germ
Description	GTDC1 (Glycosyltransferase Like Domain Containing 1) is a Protein Coding gene. Diseases associated with GTDC1 include Colon Adenocarcinoma. GO annotations related to this gene include transferase activity, transferring glycosyl groups and transferase activity.
Molecular Mass	69.4 kDa
AA Sequence	MSILIIIEAFYGGSHKQLVDLLQEELGDCVVYTLPAKKWHWRARTSALYFSQTIPISEH YRTLFASSVLNLTELAALRPDLGKLLKILYFHENQLIYPVKKCQERDFQYGYNQILSCL VADVVFNSVFNMESFLTSMGKFMKLIPDHRPKDLESIIRPKCQVIYFPIRFPDVS RF MPKHKTTHLKKMLGLKGNNGGAVLSMALPFQPEQRDSEDLLKNFNSECDTHCGLDT ARQEYLGNSLRQESDLKSTSSDNSSSHHGENKQNLTVDPDILGGVDNQRRLLHI VWPHRWLEAVYCGCYPLCPKDLVYPEIFPAEYLYSTPEQLSKRLQNFCKRPDIIRKH LYKGEIAPFSWAALHGKFRSLLTTEPREDL
Applications	Enzyme-linked Immunoabsorbent Assay Western Blot (Recombinant protein) Antibody Production

 Tel: 1-631-559-9269 1-516-512-3133

 Email: info@creative-biomart.com  Fax: 1-631-938-8127

 45-1 Ramsey Road, Shirley, NY 11967, USA

Protein Array

Notes	Best use within three months from the date of receipt of this protein.
Storage	Store at -8 centigrade. Aliquot to avoid repeated freezing and thawing.
Storage Buffer	50 mM Tris-HCl, 10 mM reduced Glutathione, pH=8.0 in the elution buffer.

GENE INFORMATION

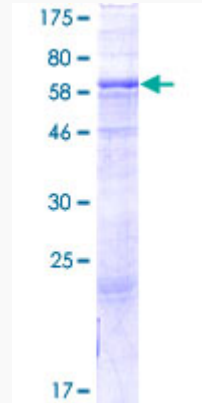
Gene Name	GTDC1 glycosyltransferase-like domain containing 1 [Homo sapiens]
Official Symbol	GTDC1
Synonyms	GTDC1; glycosyltransferase-like domain containing 1; glycosyltransferase-like domain-containing protein 1; FLJ11753; glycosyltransferase-like 1; mannosyltransferase candidate; mat-Xa; Hmat-Xa; FLJ44822;
Gene ID	79712
mRNA Refseq	NM_001006636
Protein Refseq	NP_001006637
MIM	610165
UniProt ID	Q4AE62

 Tel: 1-631-559-9269 1-516-512-3133

 Email: info@creative-biomart.com  Fax: 1-631-938-8127

 45-1 Ramsey Road, Shirley, NY 11967, USA

**Quality Control
Testing**



12.5% SDS-PAGE Stained with Coomassie Blue.

 Tel: 1-631-559-9269 1-516-512-3133

 Email: info@creative-biomart.com  Fax: 1-631-938-8127

 45-1 Ramsey Road, Shirley, NY 11967, USA