

## Recombinant Human GTF2A1 Protein, GST-tagged

Cat. No. GTF2A1-4437H Lot. No. (See product label)

### SPECIFICATION

<b>Product Overview</b>	Human GTF2A1 full-length ORF ( NP_056943.1, 1 a.a. - 376 a.a.) recombinant protein with GST-tag at N-terminal.
<b>Species</b>	Human
<b>Source</b>	Wheat Germ
<b>Description</b>	Accurate transcription initiation on TATA-containing class II genes involves the ordered assembly of RNA polymerase II (POLR2A; MIM 180660) and several general initiation factors (summarized by DeJong and Roeder, 1993 [PubMed 8224848]). One of these factors is TFIIA, which when purified from HeLa extracts consists of 35-, 19-, and 12-kD subunits.[supplied by OMIM, Jul 2010]
<b>Molecular Mass</b>	67.9 kDa
<b>AA Sequence</b>	MANSANTNTVPKLYRSVIEDVINDVRDIFLDDGVDEQVLMELKTLWENKLMQSRVAVD GFHSEEQQLLLQVQQQHQPQQQQHHHHHHHQQAQPPQQTVPQQAQTQQVLIPAS QQATAPQVIVPDSKLIQHMNASNMSAAATAATLALPAGVTPVQQILTNSGQLLQVV AANGAQYIFQPQQSVVLQQQVIPQMPPGGVQAPVIQQVLAPLPGGISPQGTGVIIQPQ QILFTGNKTQVIPTTVAAPTPAQQAQITATGQQQPQAQPAQTQAPLVLQVDGTGDTSS EEDEDEEEDYDDDEEEDKEKDGAEQVVEEPLNSEDDVSDEEGQELFDTENVVV CQYDKIHRSKNKWKFLKDGIMNLNGRDYIFSKAIGDAEW
<b>Applications</b>	Enzyme-linked Immunoabsorbent Assay Western Blot (Recombinant protein)

 Tel: 1-631-559-9269 1-516-512-3133

 Email: [info@creative-biomart.com](mailto:info@creative-biomart.com)  Fax: 1-631-938-8127

 45-1 Ramsey Road, Shirley, NY 11967, USA

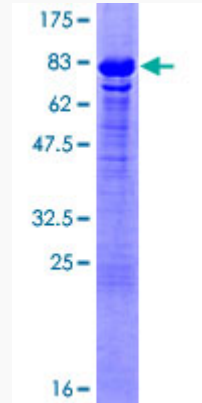
	Antibody Production Protein Array
<b>Notes</b>	Best use within three months from the date of receipt of this protein.
<b>Storage</b>	Store at -8 centigrade. Aliquot to avoid repeated freezing and thawing.
<b>Storage Buffer</b>	50 mM Tris-HCl, 10 mM reduced Glutathione, pH=8.0 in the elution buffer.
<b>GENE INFORMATION</b>	
<b>Gene Name</b>	GTF2A1 general transcription factor IIA, 1, 19/37kDa [ Homo sapiens ]
<b>Official Symbol</b>	GTF2A1
<b>Synonyms</b>	GTF2A1; general transcription factor IIA, 1, 19/37kDa; glucose regulated protein, 58kD pseudogene; transcription initiation factor IIA subunit 1; TFIIA; TFIIAL; TFIIA-42; TFIIA alpha, p55, isoform 1; general transcription factor IIA subunit 1; transcription initiation factor TFIIA 42 kDa subunit; TF2A1; MGC129969; MGC129970;
<b>Gene ID</b>	2957
<b>mRNA Refseq</b>	NM_015859
<b>Protein Refseq</b>	NP_056943
<b>MIM</b>	600520
<b>UniProt ID</b>	P52655

 Tel: 1-631-559-9269 1-516-512-3133

 Email: [info@creative-biomart.com](mailto:info@creative-biomart.com)  Fax: 1-631-938-8127

 45-1 Ramsey Road, Shirley, NY 11967, USA

**Quality Control  
Testing**



12.5% SDS-PAGE Stained with Coomassie Blue.

 Tel: 1-631-559-9269 1-516-512-3133

 Email: [info@creative-biomart.com](mailto:info@creative-biomart.com)  Fax: 1-631-938-8127

 45-1 Ramsey Road, Shirley, NY 11967, USA