

Recombinant Human GTF2A1L Protein, GST-tagged

Cat. No. GTF2A1L-458H Lot. No. (See product label)

SPECIFICATION

Product Overview	Human ALF full-length ORF (NP_006863.2, 1 a.a. - 478 a.a.) recombinant protein with GST-tag at N-terminal.
Species	Human
Source	Wheat Germ
Description	The assembly and stability of the RNA polymerase II transcription pre-initiation complex on a eukaryotic core promoter involve the effects of transcription factor IIA (TFIIA) on the interaction between TATA-binding protein (TBP) and DNA. This gene encodes a germ cell-specific counterpart of the large (alpha/beta) subunit of general transcription factor TFIIA that is able to stabilize the binding of TBP to DNA and may be uniquely important to testis biology. Alternative splicing for this locus has been observed and two variants, encoding distinct isoforms, have been identified. Co-transcription of this gene and the neighboring upstream gene generates a rare transcript (SALF), which encodes a fusion protein comprised of sequence sharing identity with each individual gene product. [provided by RefSeq, Mar 2014]
Molecular Mass	78.8 kDa
AA Sequence	MACLNPVPKLYRSVIEDVIEGVRNLF AEEGIEEQVLKDLKQLWETKVLQSKATEDFFR NSIQSPLFTLQLPHSLHQTLQSSTASLVIPAGRTLPSFTTAE LGTSNSSANFTFPGYPI HVPAGVTLQTVSGHLYKVNVPIMVTETSGRAGILQHP IQQVFQQLGQPSVIQTSVPQ LNPWSLQATTEKSQRIETVLQQPAILPSGPVDRKHLENATSDILVSPGNEHKIVPEAL

 Tel: 1-631-559-9269 1-516-512-3133

 Email: info@creative-biomart.com  Fax: 1-631-938-8127

 45-1 Ramsey Road, Shirley, NY 11967, USA

LCHQESSHYISLPGVVFPQVSQTNSNVESVLSGSASMAQNLHDESLSTSPHGALH
 QHVTDIQLHILKNRMYGCDSVKQPRNIEEPSNIPVSEKDSNSQVDLSIRVTDDDIGEII
 QVDGSGDTSSNEEIGSTRDADENEFLGNIDGGDLKVPEEEADSISNEDSATNSSDN
 EDPQVNIVEEDPLNSGDDVSEQDVPDLFDTDNVIVCQYDKIHRSKNKWKFYLKDGV
 MCFGGRDYVFAKAIGDAEW

Applications Enzyme-linked Immunoabsorbent Assay; Western Blot (Recombinant protein);
 Antibody Production; Protein Array

Notes Best use within three months from the date of receipt of this protein.

Storage Store at -80 centigrade. Aliquot to avoid repeated freezing and thawing.

Storage Buffer 50 mM Tris-HCl, 10 mM reduced Glutathione, pH=8.0 in the elution buffer.

GENE INFORMATION

Gene Name [GTF2A1L general transcription factor IIA, 1-like \[Homo sapiens \]](#)

Official Symbol [GTF2A1L](#)

Synonyms GTF2A1L; general transcription factor IIA, 1-like; TFIIA-alpha and beta-like factor;
 GTF2A1-like factor; TFIIA-alpha/beta-like factor; TFIIA large subunit isoform ALF;
 general transcription factor II A, 1-like factor; ALF; MGC26254;

Gene ID [11036](#)

mRNA Refseq [NM_001193487](#)

Protein Refseq [NP_001180416](#)

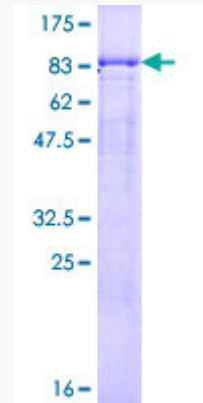
 Tel: 1-631-559-9269 1-516-512-3133

 Email: info@creative-biomart.com  Fax: 1-631-938-8127

 45-1 Ramsey Road, Shirley, NY 11967, USA

MIM 605358

UniProt ID Q9UNN4



12.5% SDS-PAGE Stained with Coomassie Blue.

Tel: 1-631-559-9269 1-516-512-3133

Email: info@creative-biomart.com Fax: 1-631-938-8127

45-1 Ramsey Road, Shirley, NY 11967, USA