

Recombinant Human GTF2H1 Protein (Thr84-Met335), N-His tagged

Cat. No. GTF2H1-2773H **Lot. No.** (See product label)

SPECIFICATION

Product Overview	Recombinant human GTF2H1 (Thr84-Met335) protein fused with the N-His tag was expressed in E. coli.
Species	Human
Source	E.coli
ProteinLength	Thr84-Met335
Molecular Mass	30.79 kDa
Purity	>90 % as determined by SDS-PAGE.
Notes	For research use only.
Storage	Use a manual defrost freezer and avoid repeated freeze thaw cycles. Store at 2 to 8 centigrade for one week. Store at -20 to -80 centigrade for twelve months from the date of receipt.
Storage Buffer	0.01M PBS, pH 7.4, 0.02 % NLS
Reconstitution	Reconstitute in sterile water for a stock solution.
Shipping	In general, proteins are provided as lyophilized powder/frozen liquid. They are

 Tel: 1-631-559-9269 1-516-512-3133

 Email: info@creative-biomart.com  Fax: 1-631-938-8127

 45-1 Ramsey Road, Shirley, NY 11967, USA

shipped out with dry ice/blue ice unless customers require otherwise.

GENE INFORMATION

Gene Name GTF2H1 general transcription factor IIH, polypeptide 1, 62kDa [Homo sapiens (human)]

Official Symbol GTF2H1

Synonyms GTF2H1; general transcription factor IIH, polypeptide 1, 62kDa; general transcription factor IIH, polypeptide 1 (62kD subunit); general transcription factor IIH subunit 1; BTF2; BTF2 p62; basic transcription factor 2 62 kDa subunit; general transcription factor IIH polypeptide 1; TFIIH basal transcription factor complex p62 subunit; TFB1; TFIIH;

Gene ID 2965

mRNA Refseq NM_001142307

Protein Refseq NP_001135779

MIM 189972

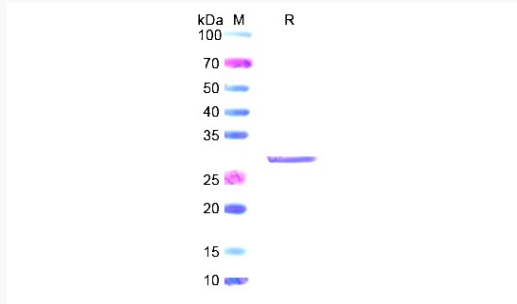
UniProt ID P32780

 Tel: 1-631-559-9269 1-516-512-3133

 Email: info@creative-biomart.com  Fax: 1-631-938-8127

 45-1 Ramsey Road, Shirley, NY 11967, USA

SDS-PAGE



 Tel: 1-631-559-9269 1-516-512-3133

 Email: info@creative-biomart.com  Fax: 1-631-938-8127

 45-1 Ramsey Road, Shirley, NY 11967, USA