

Recombinant Human GTF2H1 Protein, GST-tagged

Cat. No. GTF2H1-4447H Lot. No. (See product label)

SPECIFICATION

Product Overview	Human GTF2H1 full-length ORF (AAH00365, 1 a.a. - 548 a.a.) recombinant protein with GST-tag at N-terminal.
Species	Human
Source	Wheat Germ
Description	GTF2H1 (General Transcription Factor IIH Subunit 1) is a Protein Coding gene. Diseases associated with GTF2H1 include Xeroderma Pigmentosum, Group B and Rift Valley Fever. Among its related pathways are HIV Life Cycle and CCR5 Pathway in Macrophages. GO annotations related to this gene include protein kinase activity and RNA polymerase II carboxy-terminal domain kinase activity.
Molecular Mass	86.02 kDa
AA Sequence	MATSSEEVLLIVKKVRQKKQDGALYLMAERIAWAPEGKDRFTISHMYADIKCQKISPE GKAKIQLQLVLHAGDTTNFHFSNESTAVKERDAVKDLLQQLLPKFKRKANKELEEKN RMLQEDPVLFQLYKDLVVSQVISAEFWANRLNVNATDSSSTSNHKQDVGISAFLA DVRPQTDGCNGLRYNLTSDIIESIFRTYPAVKMKYAENVPHNMTEKEFWTRFFQSHY FHRDRLNTGSKDLFAECAKIDEKGLKTMVSLGVKNPLDLLTALEDKPLDEGYGISSVP SASNSKSIKENSNAAIKRFNHHSAMVLAAGLRKQEAQNEQTSEPSNMDGNSGDAD CFQPAVKRAKLQESIEYEDLGKNNSVKTIALNLKKSDDRYHGPPTPIQSLQYATSQDIIN SFQSIRQEMEAYTPKLTQVLSSSAASSTITALSPGGALMQGGTQQAINQMVPNDIQS ELKHLYVAVGELLRHFWSFCFPVNTPFLEEKVVKMKSNERFQVTKLCPFQEKIRRQY

 Tel: 1-631-559-9269 1-516-512-3133

 Email: info@creative-biomart.com  Fax: 1-631-938-8127

 45-1 Ramsey Road, Shirley, NY 11967, USA

LSTNLVSHIEEMLQTAYNKLHTWQSRRLMKKT

Applications

Enzyme-linked Immunoabsorbent Assay
 Western Blot (Recombinant protein)
 Antibody Production
 Protein Array

Notes

Best use within three months from the date of receipt of this protein.

Storage

Store at -8 centigrade. Aliquot to avoid repeated freezing and thawing.

Storage Buffer

50 mM Tris-HCl, 10 mM reduced Glutathione, pH=8.0 in the elution buffer.

GENE INFORMATION

Gene Name

[GTF2H1](#) general transcription factor IIH, polypeptide 1, 62kDa [Homo sapiens]

Official Symbol

[GTF2H1](#)

Synonyms

GTF2H1; general transcription factor IIH, polypeptide 1, 62kDa; general transcription factor IIH, polypeptide 1 (62kD subunit); general transcription factor IIH subunit 1; BTF2; BTF2 p62; basic transcription factor 2 62 kDa subunit; general transcription factor IIH polypeptide 1; TFIIH basal transcription factor complex p62 subunit; TFB1; TFIIH;

Gene ID

[2965](#)

mRNA Refseq

[NM_001142307](#)

Protein Refseq

[NP_001135779](#)

 Tel: 1-631-559-9269 1-516-512-3133

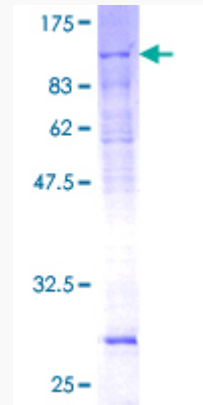
 Email: info@creative-biomart.com  Fax: 1-631-938-8127

 45-1 Ramsey Road, Shirley, NY 11967, USA

MIM 189972

UniProt ID P32780

**Quality Control
Testing**



12.5% SDS-PAGE Stained with Coomassie Blue.

 Tel: 1-631-559-9269 1-516-512-3133

 Email: info@creative-biomart.com  Fax: 1-631-938-8127

 45-1 Ramsey Road, Shirley, NY 11967, USA