

Recombinant Human GTF2I Protein (1-976), N-GST-tagged

Cat. No. GTF2I-15H Lot. No. (See product label)

SPECIFICATION

Product Overview	Human GTF2I full-length ORF (AAH99907.1, 1 a.a.-976 a.a.) recombinant protein with GST-tag at N-terminal.
Species	Human
Source	Wheat Germ
ProteinLength	1-976
Description	This gene encodes a phosphoprotein containing six characteristic repeat motifs. The encoded protein binds to the initiator element (Inr) and E-box element in promoters and functions as a regulator of transcription. This locus, along with several other neighboring genes, is deleted in Williams-Beuren syndrome. There are many closely related genes and pseudogenes for this gene on chromosome 7. This gene also has pseudogenes on chromosomes 9, 13, and 21. Alternatively spliced transcript variants encoding multiple isoforms have been observed.
Molecular Mass	136.5 kDa
AA Sequence	MAQVAMSTLPVEDEESSESRMVVTFLLMSALESMCKELAKSKAEVACIAVYETDVFV VGTERGRAFVNTRKDFQKDFVKYCVEEEEKAAEMHKMKSTTQANRMSVDAVEIETL RKTVEDYFCFCYGKALGKSTVVPVPYEKMLRDQSAVVVQGLPEGVAFKHPENYDLA TLKWILENKAGISFIIKRPFLPKKHVGGRRVMVTDADR SILSPGGSCGPIKVKTEPTED SGISLEMAAVTVKEESEDPDYYQYNIQGPSETDDVDEKQPLSKPLQGSHHSSEGNE GTEMEVPAEDDDYSPPSKRPKANELPQPPVPEPANAGKRKRVREFNFEKWNARITDL

 Tel: 1-631-559-9269 1-516-512-3133

 Email: info@creative-biomart.com  Fax: 1-631-938-8127

 45-1 Ramsey Road, Shirley, NY 11967, USA



RKQVEELFERKYAQAIAKAKGPVTIPYPLFQSHVEDLYVEGLPEGIPFRRPSTYGIPRL
 ERILLAKERIRFVIKKHELLNSTREDLQLDKPASGVKEEWYARITKLRKMVDQLFCKK
 FAEALGSTEAKAVPYQKFEAHPNDLYVEGLPENIPFRSPSWYGIPRLEKIIQVGNRIK
 FVIKRPELLTHSTTEVTQPRNTNPVKEDWNVKITLRKQVEEIFNLKFAQALGLTEAV
 KVPYPVFESNPEFLYVEGLPEGIPFRSPTWFGIPRLERIVRGSNKIKFVVKPELVISY
 LPPGMASKINTKALQSPKRPRSPGSNSKVPEIEVTVEGPNNNNPQTSAVRTPQTN
 GSNVPFKPRGREFSFEAWNAKITDLKQKVENLFNEKCGEALGLKQAVKVPFALFESF
 PEDFYVEGLPEGVPPFRPSTFGIPRLEKILRNKAKIKFIIKKPEMFETAIKESTSSKSP
 RKINSSPNVNTTASGVEDLNIIQVTIPDDDNERLSKVEKARQLREQVNDLFSRKFGEA
 IGMGFPVKVPYRKITINRGCVVVDGMPPGVVSFKAPSYLEISSMRRILDSAEFIKFTVIR
 PFPGLVVNNQLVDQSESEGPVIQESAEPSQLEVPATEEIKETDGSSQIKQEPDPTW

Applications

Enzyme-linked Immunoabsorbent Assay
 Western Blot (Recombinant protein)
 Antibody Production
 Protein Array

Notes

Best use within three months from the date of receipt of this protein.

Storage

Store at -80 centigrade. Aliquot to avoid repeated freezing and thawing.

Storage Buffer

50 mM Tris-HCl, 10 mM reduced Glutathione, pH=8.0 in the elution buffer.

GENE INFORMATION

Gene Name

GTF2I general transcription factor Ili [Homo sapiens (human)]

Official Symbol

GTF2I

Synonyms

GTF2I; general transcription factor Ili; WBS; DIWS; SPIN; IB291; BAP135; BTKAP1;
 TFII-I; WBSCR6; GTFII-I; general transcription factor II-I; BTK-associated protein,

Tel: 1-631-559-9269 1-516-512-3133

Email: info@creative-biomart.com Fax: 1-631-938-8127

45-1 Ramsey Road, Shirley, NY 11967, USA

135kD; Bruton tyrosine kinase-associated protein 135; SRF-Phox1-interacting protein; Williams-Beuren syndrome chromosome region 6

Gene ID 2969

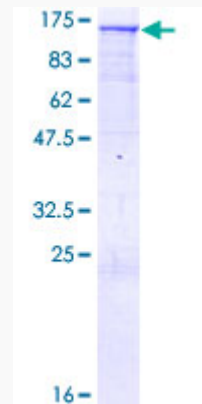
mRNA Refseq NM_001518

Protein Refseq NP_001509

MIM 601679

UniProt ID P78347

**Quality Control
Testing**



12.5% SDS-PAGE Stained with Coomassie Blue.

 Tel: 1-631-559-9269 1-516-512-3133

 Email: info@creative-biomart.com  Fax: 1-631-938-8127

 45-1 Ramsey Road, Shirley, NY 11967, USA