

Recombinant Human GTF2I Protein, GST-tagged

Cat. No. GTF2I-4454H **Lot. No.** (See product label)

SPECIFICATION

Product Overview	Human GTF2I full-length ORF (AAH04472.1, 36 a.a. - 274 a.a.) recombinant protein with GST-tag at N-terminal.
Species	Human
Source	Wheat Germ
Description	This gene encodes a multifunctional phosphoprotein with roles in transcription and signal transduction. It is deleted in Williams-Beuren syndrome, a multisystem developmental disorder caused by the deletion of contiguous genes at chromosome 7q11.23. Alternative splicing results in multiple transcript variants. Related pseudogenes have been identified on chromosomes 7, 13 and 21. [provided by RefSeq]
Molecular Mass	52.03 kDa
AA Sequence	ELAKSKAEVACIAVYETDVFVVGTERGRAFVNTRKDFQKDFVKYCVVEEEEKAAEMH KMKSTTQANRMSVDAVEIETLRKTVEDYFCFCYGKALGKSTVVPVPEKMLRDQSA VVVQGLPEGVAFKHPENYDLATLKWILENKAGISFIIKRPFLEPKKHVGGRRVMVTDAD RSILSPGGSCGPIKVKTEPTEDSGISLEMAAVTVKEESEDPDYYQYNIQGS HHSSEG NEGTEMEVPAEG
Applications	Enzyme-linked Immunoabsorbent Assay Western Blot (Recombinant protein) Antibody Production

 Tel: 1-631-559-9269 1-516-512-3133

 Email: info@creative-biomart.com  Fax: 1-631-938-8127

 45-1 Ramsey Road, Shirley, NY 11967, USA

Protein Array

Notes	Best use within three months from the date of receipt of this protein.
Storage	Store at -8 centigrade. Aliquot to avoid repeated freezing and thawing.
Storage Buffer	50 mM Tris-HCl, 10 mM reduced Glutathione, pH=8.0 in the elution buffer.

GENE INFORMATION

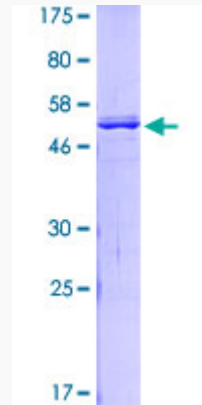
Gene Name	GTF2I general transcription factor Iii [Homo sapiens]
Official Symbol	GTF2I
Synonyms	GTF2I; general transcription factor Iii; general transcription factor II, i , WBSCR6; general transcription factor II-I; BAP 135; BTKAP1; DIWS; IB291; SPIN; TFII I; BTK-associated protein 135; BTK-associated protein, 135kD; SRF-Phox1-interacting protein; Williams-Beuren syndrome chromosome region 6; Bruton tyrosine kinase-associated protein 135; williams-Beuren syndrome chromosomal region 6 protein; WBS; BAP135; TFII-I; WBSCR6; GTFII-I; FLJ38776; FLJ56355;
Gene ID	2969
mRNA Refseq	NM_001163636
Protein Refseq	NP_001157108
MIM	601679
UniProt ID	P78347

 Tel: 1-631-559-9269 1-516-512-3133

 Email: info@creative-biomart.com  Fax: 1-631-938-8127

 45-1 Ramsey Road, Shirley, NY 11967, USA

**Quality Control
Testing**



12.5% SDS-PAGE Stained with Coomassie Blue.

 Tel: 1-631-559-9269 1-516-512-3133

 Email: info@creative-biomart.com  Fax: 1-631-938-8127

 45-1 Ramsey Road, Shirley, NY 11967, USA