

## Recombinant Human GTF2IRD2 Protein, GST-tagged

**Cat. No.** GTF2IRD2-4460H    **Lot. No.** (See product label)

### SPECIFICATION

**Product Overview**      Human GTF2IRD2 full-length ORF ( AAH67859.1, 1 a.a. - 498 a.a.) recombinant protein with GST-tag at N-terminal.

**Species**                      Human

**Source**                        Wheat Germ

**Description**                This gene is unusual in that its coding sequence is mostly derived from Charlie8 repeat elements. However, there is mRNA and EST evidence to suggest that this gene is transcribed, and the encoded protein has a homolog in mouse, with which it shares 78% sequence identity. The exact function of this gene product is not known. It is inferred to be a transcription factor based on the presence of GTF2I-like repeats (containing helix-loop-helix motifs), also found in other proteins such as GTF2IRD1 and GTF2I. These three genes are clustered together on chr 7q11.23. [provided by RefSeq]

**Molecular Mass**            80.8 kDa

**AA Sequence**                MAQVAVSTLPVEEESSETRMVVTFVLVSALESMCKELAKSKAEVACIAVYETDVFV  
GTERGCAFNARTDFQKDFAKYCVAEGLCEVKPPCPVNGMQVHSGETEILRKAVE  
DYFCFCYGKALGTTVMVPVPYEKMLRDQSAVVVQGLPEGVAFQHPENYDLATLKI  
LENKAGISFIINRPFLGPESQLGGPGMVTDAERSIVSPSESCGPINVKTEPMEDSGISL  
KAEAVSVKKESEDPNYYQYNMQGSHPSSTSNEVIEMELPMEDSTPLVPSEEPNEDP  
EAEVKIEGNTNSSSVTNSAAGVEDLNIVQVTPDNEKERLSSIEKIKQLREQVNDLFS

 Tel: 1-631-559-9269    1-516-512-3133

 Email: [info@creative-biomart.com](mailto:info@creative-biomart.com)     Fax: 1-631-938-8127

 45-1 Ramsey Road, Shirley, NY 11967, USA

RKFGAIGVDFPVKVPYRKITFNPGCVVIDGMPPGVVFKAPGYLEISSMRRILEAAEFI  
 KFTVIRPLPGLELSNGLLEAGAGGLEAGSLRPAWATWQDPISTKNLKISWKQWLTP  
 VAPATWQAEAGGSLELRSLRQQRTIAILHSSLGDRTRPCL

|                       |   |
|-----------------------|---|
| <b>Applications</b>   | Enzyme-linked Immunoabsorbent Assay<br>Western Blot (Recombinant protein)<br>Antibody Production<br>Protein Array |
| <b>Notes</b>          | Best use within three months from the date of receipt of this protein.  |
| <b>Storage</b>        | Store at -8 centigrade. Aliquot to avoid repeated freezing and thawing.   |
| <b>Storage Buffer</b> | 50 mM Tris-HCl, 10 mM reduced Glutathione, pH=8.0 in the elution buffer.  |

## GENE INFORMATION

|                        |  |
|------------------------|--|
| <b>Gene Name</b>       | GTF2IRD2 GTF2I repeat domain containing 2 [ Homo sapiens ]   |
| <b>Official Symbol</b> | GTF2IRD2   |
| <b>Synonyms</b>        | GTF2IRD2; GTF2I repeat domain containing 2; general transcription factor II-I repeat domain-containing protein 2A; FLJ37938; GTF2IRD2A; transcription factor GTF2IRD2; GTF2IRD2 alpha; transcription factor GTF2IRD2-alpha; GTF2I repeat domain-containing protein 2A; general transcription factor II i repeat domain 2 alpha; FP630; FLJ21423; MGC75203; |
| <b>Gene ID</b>         | 84163  |
| <b>mRNA Refseq</b>     | NM_173537  |

 Tel: 1-631-559-9269 1-516-512-3133

 Email: [info@creative-biomart.com](mailto:info@creative-biomart.com)  Fax: 1-631-938-8127

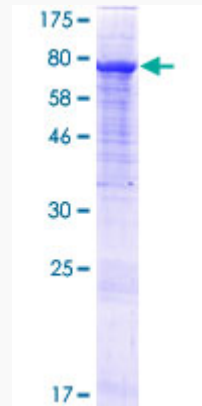
 45-1 Ramsey Road, Shirley, NY 11967, USA

**Protein Refseq** NP\_775808

**MIM** 608899

**UniProt ID** Q86UP8

**Quality Control  
Testing**



12.5% SDS-PAGE Stained with Coomassie Blue.

 Tel: 1-631-559-9269 1-516-512-3133

 Email: [info@creative-biomart.com](mailto:info@creative-biomart.com)  Fax: 1-631-938-8127

 45-1 Ramsey Road, Shirley, NY 11967, USA