

Recombinant Human GTF3A Protein, GST-tagged

Cat. No. GTF3A-4461H Lot. No. (See product label)

SPECIFICATION

Product Overview	Human GTF3A partial ORF (NP_002088, 185 a.a. - 274 a.a.) recombinant protein with GST-tag at N-terminal.
Species	Human
Source	Wheat Germ
Description	The product of this gene is a zinc finger protein with nine Cis[2]-His[2] zinc finger domains. It functions as an RNA polymerase III transcription factor to induce transcription of the 5S rRNA genes. The protein binds to a 50 bp internal promoter in the 5S genes called the internal control region (ICR), and nucleates formation of a stable preinitiation complex. This complex recruits the TFIIC and TFIIB transcription factors and RNA polymerase III to form the complete transcription complex. The protein is thought to be translated using a non-AUG translation initiation site in mammals based on sequence analysis, protein homology, and the size of the purified protein. [provided by RefSeq]
Molecular Mass	35.64 kDa
AA Sequence	NQQKQYICSFEDCKKTFKKHQQLKIHQCQNTNEPLFKCTQEGCGKHFASPSKLRH AKAHEGYVCQKGCSFVAKTWTELLKHVRETHKEE
Applications	Enzyme-linked Immunoabsorbent Assay Western Blot (Recombinant protein) Antibody Production

 Tel: 1-631-559-9269 1-516-512-3133

 Email: info@creative-biomart.com  Fax: 1-631-938-8127

 45-1 Ramsey Road, Shirley, NY 11967, USA

Protein Array

Notes	Best use within three months from the date of receipt of this protein.
Storage	Store at -8 centigrade. Aliquot to avoid repeated freezing and thawing.
Storage Buffer	50 mM Tris-HCl, 10 mM reduced Glutathione, pH=8.0 in the elution buffer.

GENE INFORMATION

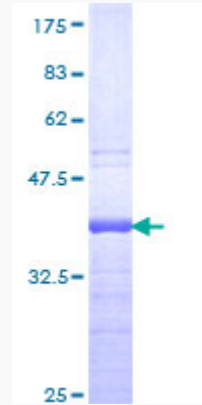
Gene Name	GTF3A general transcription factor IIIA [Homo sapiens]
Official Symbol	GTF3A
Synonyms	GTF3A; general transcription factor IIIA; transcription factor IIIA; AP2; TFIIIA;
Gene ID	2971
mRNA Refseq	NM_002097
Protein Refseq	NP_002088
MIM	600860
UniProt ID	Q92664

 Tel: 1-631-559-9269 1-516-512-3133

 Email: info@creative-biomart.com  Fax: 1-631-938-8127

 45-1 Ramsey Road, Shirley, NY 11967, USA

**Quality Control
Testing**



12.5% SDS-PAGE Stained with Coomassie Blue.

 Tel: 1-631-559-9269 1-516-512-3133

 Email: info@creative-biomart.com  Fax: 1-631-938-8127

 45-1 Ramsey Road, Shirley, NY 11967, USA