

Recombinant Human GTF3C2 protein, His-tagged

Cat. No. GTF3C2-2767H Lot. No. (See product label)

SPECIFICATION

Product Overview	Recombinant Human GTF3C2 protein(59-188 aa), fused with N-terminal His tag, was expressed in E. coli.
Species	Human
Source	E. coli
ProteinLength	59-188 aa
Form	The purified protein was lyophilized from sterile phosphate-buffered saline (PBS: 58 mM Na ₂ HPO ₄ , 17 mM NaH ₂ PO ₄ , 68 mM NaCl, pH 7.4). Prior to lyophilization, 5% (w/v) trehalose and 5% (w/v) mannitol were incorporated as cryoprotective excipients. The protein was eluted with a buffer containing 300 mM imidazole.
AASequence	GFEDSPDQRRLLPPEQESLSRLEQPDLSSSEMSKVSKPRASKPGRKRGRTRKGPKR PQQPNPPSAPLVPGLLDQSNPLSTPMPKKRGRKSKAELLLLKSKDLDRPESQSPK RPPEDFETPSGERPRRRAA
Purity	85%, by SDS-PAGE.
Storage	Store at 2-8°C for 1-2 weeks. Aliquot and store at -20°C to -80°C for up to 3 months, reconstitution with sterile water and addition of an equal volume of glycerol. Avoid repeat freeze-thaw cycles.
Reconstitution	It is recommended that sterile water be added to the vial to prepare a stock solution of

 Tel: 1-631-559-9269 1-516-512-3133

 Email: info@creative-biomart.com  Fax: 1-631-938-8127

 45-1 Ramsey Road, Shirley, NY 11967, USA

0.25 ug/ul. Centrifuge the vial at 4°C before opening to recover the entire contents.

GENE INFORMATION

Gene Name	GTF3C2 general transcription factor IIIC, polypeptide 2, beta 110kDa [Homo sapiens]
Official Symbol	GTF3C2
Synonyms	GTF3C2; general transcription factor IIIC, polypeptide 2, beta 110kDa; general transcription factor IIIC, polypeptide 2 (beta subunit, 110kD); general transcription factor 3C polypeptide 2; KIAA0011; TFIIC110; TF3C-beta; TFIIC 110 kDa subunit; transcription factor IIIC subunit beta; transcription factor IIIC 110 kDa subunit; TFIIC-BETA;
mRNA Refseq	NM_001035521
Protein Refseq	NP_001030598
MIM	604883
UniProt ID	Q8WUA4
Gene ID	2976

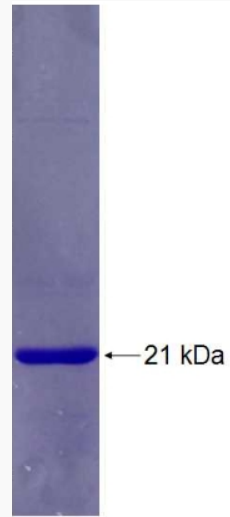
 Tel: 1-631-559-9269 1-516-512-3133

 Email: info@creative-biomart.com  Fax: 1-631-938-8127

 45-1 Ramsey Road, Shirley, NY 11967, USA



SDS-PAGE



Tel: 1-631-559-9269 1-516-512-3133

Email: info@creative-biomart.com Fax: 1-631-938-8127

45-1 Ramsey Road, Shirley, NY 11967, USA