

Recombinant Human GTPBP1 Protein, Myc/DDK-tagged, C13 and N15-labeled

Cat. No. GTPBP1-4436H **Lot. No.** (See product label)

SPECIFICATION

Product Overview	GTPBP1 MS Standard C13 and N15-labeled recombinant protein (NP_004277) with a C-terminal MYC/DDK tag, was expressed in HEK293 cells.
Species	Human
Source	HEK293
Description	This gene is upregulated by interferon-gamma and encodes a protein that is a member of the AGP11/GTPBP1 family of GTP-binding proteins. A structurally similar protein has been found in mouse, where disruption of the gene for that protein had no observable phenotype.
Molecular Mass	72.3 kDa
AA Sequence	<p>MATERSRSAMDSPVPASMFAPESPSPGAARAAAAAARLHGGFSDSCEDGEALNG EPELDLTSKLVLVSPSTSEQYDSLRLQMWERMDEGCGETIYVIGQSGDGTEYGLSEA DMEASYATVKSMAEQIEADVILLRERQEAGGRVRDYLVRKRVDNDFLEVRVAVVG NVDAGKSTLLGVLTHGELDNGRGFARQKLFHRKHIEESGRTSSVGNLILGFDSEGN VVNKPDSHGGSLWTKICEKSTKVITFIDLAGEHEKYLKTTVFGMTGHLPDFCMLMVG SNAGIVGMTKEHLGLALALNVPVVFVVTKIDMCPANILQETLKLRLKSPGCRKIPV LVQSKDDVIVTASNFSSERMCPFIQISNVTGENLDLLKMFLNLLSPRTSYREEEPAEF QIDDTYSVPGVGTVVSGTTLRGLIKLNDTLLLGPDPGLGNFLSIIVKSIHRKRMPVKEV RGGQTASFALKKIKRSSIRKGMVMVSPRLNPQASWEFEAEILVLHHPPTTISPRYQAM</p>

 Tel: 1-631-559-9269 1-516-512-3133

 Email: info@creative-biomart.com  Fax: 1-631-938-8127

 45-1 Ramsey Road, Shirley, NY 11967, USA

VHCGSIRQTATILSMDKDCLRTGDKATVHFRFIKTPEYLHIDQRLVFRGRTKAVGTIT
 KLLQTTNNSPMNSKPKQIKMQSTKKGPLTKRDEGGPSGGPAVGAPPPGDEASSVG
 AGQPAASSNLQPQPKPSSGRRRGGQRHKVKSQGACVTPASGCTRTRPLEQKLIS
 EEDLAANDILDYKDDDDKV

Purity > 80% as determined by SDS-PAGE and Coomassie blue staining

Stability Stable for 3 months from receipt of products under proper storage and handling conditions.

Storage Store at -80 centigrade. Avoid repeated freeze-thaw cycles.

Concentration 50 µg/mL as determined by BCA

Storage Buffer 100 mM glycine, 25 mM Tris-HCl, pH 7.3.

GENE INFORMATION

Gene Name [GTPBP1 GTP binding protein 1 \[Homo sapiens \(human\) \]](#)

Official Symbol [GTPBP1](#)

Synonyms GTPBP1; GTP binding protein 1; GTP-binding protein 1; GP 1; HSPC018; G-protein 1; GP1; GP-1; MGC20069;

Gene ID [9567](#)

mRNA Refseq [NM_004286](#)

Protein Refseq [NP_004277](#)

 Tel: 1-631-559-9269 1-516-512-3133

 Email: info@creative-biomart.com  Fax: 1-631-938-8127

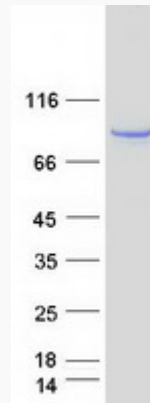
 45-1 Ramsey Road, Shirley, NY 11967, USA



MIM 602245

UniProt ID O00178

SDS-PAGE



Tel: 1-631-559-9269 1-516-512-3133

Email: info@creative-biomart.com Fax: 1-631-938-8127

45-1 Ramsey Road, Shirley, NY 11967, USA