

# Recombinant Human GTPBP10 Protein, Myc/DDK-tagged, C13 and N15-labeled

**Cat. No.** GTPBP10-541H    **Lot. No.** (See product label)

## SPECIFICATION

### Product Overview

GTPBP10 MS Standard C13 and N15-labeled recombinant protein (NP\_149098) with a C-terminal MYC/DDK tag, was expressed in HEK293 cells.

### Species

Human

### Source

HEK293

### Description

Small G proteins, such as GTPBP10, act as molecular switches that play crucial roles in the regulation of fundamental cellular processes such as protein synthesis, nuclear transport, membrane trafficking, and signal transduction.

### Molecular Mass

42.9 kDa

### AA Sequence

MVHCSCVLFKRYGNFIDKLRLFTRGGSGGMGYPRLLGGEGGKGGDVVVVAQNRMT  
 LKQLKDRYPGKRFBVAGVGANSKISALKGSKGKDWEIPVPVGISVTDENGKIIGELNKE  
 NDRILVAQGGGLGGKLLTNFLPLKGGQKRRIIHLDLKLIADVGLVGFNPAGKSSLLSCVSHA  
 KPAIADYAFTTLKPELGKIMYSDFKQISVADLPGLIEGAHMNKGMGHKFLKHIERTRQ  
 LLFVVDISGFQLSSHTQYRTAFETIILLTKELELYKEELQTKPALLAVNKMDLPDAQDK  
 FHELMSQLQNPKDFLHLFEKNMIPERTVEFQHIIPISAVTGEGIEELKNCIRKSLDEQA  
 NQENDALHKKQLLNWLWISDTMSSTEPSKHAVTTSKMDIITRTRPLEQKLISEEDLAA  
 NDILDYKDDDDKV

### Purity

> 80% as determined by SDS-PAGE and Coomassie blue staining

 Tel: 1-631-559-9269    1-516-512-3133

 Email: [info@creative-biomart.com](mailto:info@creative-biomart.com)     Fax: 1-631-938-8127

 45-1 Ramsey Road, Shirley, NY 11967, USA

<b>Stability</b>	Stable for 3 months from receipt of products under proper storage and handling conditions.
<b>Storage</b>	Store at -80 centigrade. Avoid repeated freeze-thaw cycles.
<b>Concentration</b>	50 µg/mL as determined by BCA
<b>Storage Buffer</b>	100 mM glycine, 25 mM Tris-HCl, pH 7.3.

## GENE INFORMATION

<b>Gene Name</b>	GTPBP10 GTP binding protein 10 [ Homo sapiens (human) ]
<b>Official Symbol</b>	GTPBP10
<b>Synonyms</b>	GTPBP10; GTP-binding protein 10 (putative); GTP-binding protein 10; DKFZP686A10121; FLJ38242; protein obg homolog 2; ObgH2; UG0751c10; MGC104191; DKFZp686A10121;
<b>Gene ID</b>	85865
<b>mRNA Refseq</b>	NM_033107
<b>Protein Refseq</b>	NP_149098
<b>MIM</b>	610920
<b>UniProt ID</b>	A4D1E9

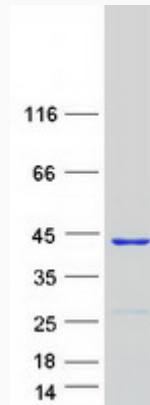
 Tel: 1-631-559-9269 1-516-512-3133

 Email: [info@creative-biomart.com](mailto:info@creative-biomart.com)  Fax: 1-631-938-8127

 45-1 Ramsey Road, Shirley, NY 11967, USA



SDS-PAGE



Tel: 1-631-559-9269 1-516-512-3133

Email: [info@creative-biomart.com](mailto:info@creative-biomart.com) Fax: 1-631-938-8127

45-1 Ramsey Road, Shirley, NY 11967, USA