

## Recombinant Human GTPBP2 Protein, GST-tagged

**Cat. No.** GTPBP2-4471H    **Lot. No.** (See product label)

### SPECIFICATION

<b>Product Overview</b>	Human GTPBP2 partial ORF ( NP_061969, 67 a.a. - 172 a.a.) recombinant protein with GST-tag at N-terminal.
<b>Species</b>	Human
<b>Source</b>	Wheat Germ
<b>Description</b>	GTP-binding proteins, or G proteins, constitute a superfamily capable of binding GTP or GDP. G proteins are activated by binding GTP and are inactivated by hydrolyzing GTP to GDP. This general mechanism enables G proteins to perform a wide range of biologic activities.[supplied by OMIM
<b>Molecular Mass</b>	37.4 kDa
<b>AA Sequence</b>	NIEYKLLKLVNPSQYRFEHLVTQMKWRLQEGRGEAVYQIGVEDNGLLVGLAEEEMRA SLKTLHRMAEKVGADITVLREREVDYDSDMPRKITEVLVRKVPDNQQFLD
<b>Applications</b>	Enzyme-linked Immunoabsorbent Assay Western Blot (Recombinant protein) Antibody Production Protein Array
<b>Notes</b>	Best use within three months from the date of receipt of this protein.
<b>Storage</b>	Store at -8 centigrade. Aliquot to avoid repeated freezing and thawing.

 Tel: 1-631-559-9269    1-516-512-3133

 Email: [info@creative-biomart.com](mailto:info@creative-biomart.com)     Fax: 1-631-938-8127

 45-1 Ramsey Road, Shirley, NY 11967, USA

**Storage Buffer** 50 mM Tris-HCl, 10 mM reduced Glutathione, pH=8.0 in the elution buffer.

## GENE INFORMATION

**Gene Name** GTPBP2 GTP binding protein 2 [ Homo sapiens ]

**Official Symbol** GTPBP2

**Synonyms** GTPBP2; GTP binding protein 2; GTP-binding protein 2; MGC74725;

**Gene ID** 54676

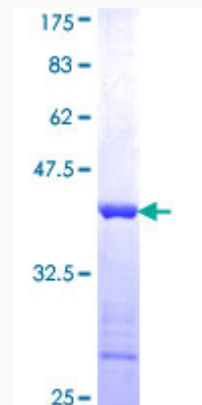
**mRNA Refseq** NM\_019096

**Protein Refseq** NP\_061969

**MIM** 607434

**UniProt ID** Q9BX10

**Quality Control Testing**



12.5% SDS-PAGE Stained with Coomassie Blue.

 Tel: 1-631-559-9269 1-516-512-3133

 Email: [info@creative-biomart.com](mailto:info@creative-biomart.com)  Fax: 1-631-938-8127

 45-1 Ramsey Road, Shirley, NY 11967, USA