

Recombinant Human GTPBP3 Protein, MYC/DDK-tagged, C13 and N15-labeled

Cat. No. GTPBP3-299H **Lot. No.** (See product label)

SPECIFICATION

Product Overview	GTPBP3 MS Standard C13 and N15-labeled recombinant protein (NP_116009) with a C-terminal MYC/DDK tag, was expressed in HEK293 cells.
Species	Human
Source	HEK293
Description	This locus encodes a GTP-binding protein. The encoded protein is localized to the mitochondria and may play a role in mitochondrial tRNA modification. Polymorphisms at this locus may be associated with severity of aminoglycoside-induced deafness, a disease associated with a mutation in the 12S rRNA. Alternatively spliced transcript variants encoding different isoforms have been described. [provided by RefSeq, Sep 2010]
Molecular Mass	52 kDa
AA Sequence	MWRGLWTLAAQAARGPRRLCTRRSSGAPAPGSGATIFALSSGQGRCGIAVIRTSGP ASGHALRILTAPRDLPLARHASLRLLSDPRSGEPLDRALVLWFPGPQSFTGEDCVEF HVHGGPAVVSGVLQALGSPGLRPAEAGEFTRRAFANGKLNLTEVEGLADLIHAET EAQRRQALRQLDGELGHLCRGWAETLTKALAHVEAYIDFGEDDNLEEGVLEQADIE VRALQVALGAHLRDARRGQRLRSGVHVVTGPPNAGKSSLVNLLSRKPVSVSPEP GTTRDVLETPVDLAGFPVLLSDTAGLREGVGPVEQEGVRRARERLEQADLILAMLDA SDLASPSSCNFLATVVASVGAQSPSDSSQHLLLVLNKSDLLSPEGPGPGPDLPPHLL

 Tel: 1-631-559-9269 1-516-512-3133

 Email: info@creative-biomart.com  Fax: 1-631-938-8127

 45-1 Ramsey Road, Shirley, NY 11967, USA

LSCLTGEGLDGLLEALRKELAAVCGDPSTDPPLLTRARHQHHLQGCLDALGHYKQS
 KDLALAAEALRVARGHLTRLTG GGGTEEILDIIIFQDFCVGKTRTRPLEQKLISEEDLAA
 NDILDYKDDDDKV

Purity > 80% as determined by SDS-PAGE and Coomassie blue staining

Stability Stable for 3 months from receipt of products under proper storage and handling conditions.

Storage Store at -80 centigrade. Avoid repeated freeze-thaw cycles.

Concentration 50 µg/mL as determined by BCA

Storage Buffer 100 mM glycine, 25 mM Tris-HCl, pH 7.3.

GENE INFORMATION

Gene Name [GTPBP3 GTP binding protein 3 \(mitochondrial\) \[Homo sapiens \(human\) \]](#)

Official Symbol [GTPBP3](#)

Synonyms GTPBP3; GTP binding protein 3 (mitochondrial); tRNA modification GTPase
 GTPBP3, mitochondrial; FLJ14700; GTPBG3; MSS1; MTGP1; THDF1; mitochondrial
 GTP-binding protein 1; FLJ17836;

Gene ID [84705](#)

mRNA Refseq [NM_032620](#)

Protein Refseq [NP_116009](#)

 Tel: 1-631-559-9269 1-516-512-3133

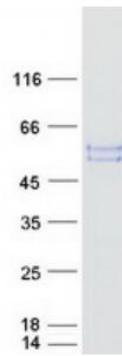
 Email: info@creative-biomart.com  Fax: 1-631-938-8127

 45-1 Ramsey Road, Shirley, NY 11967, USA

MIM 608536

UniProt ID Q969Y2

SDS-PAGE



 Tel: 1-631-559-9269 1-516-512-3133

 Email: info@creative-biomart.com  Fax: 1-631-938-8127

 45-1 Ramsey Road, Shirley, NY 11967, USA