

Recombinant Human GTSF1 Protein, Myc/DDK-tagged, C13 and N15-labeled

Cat. No. GTSF1-6231H **Lot. No.** (See product label)

SPECIFICATION

Product Overview	GTSF1 MS Standard C13 and N15-labeled recombinant protein (NP_653195) with a C-terminal MYC/DDK tag, was expressed in HEK293 cells.
Species	Human
Source	HEK293
Description	GTSF1 (Gametocyte Specific Factor 1) is a Protein Coding gene. Diseases associated with GTSF1 include Pityriasis Rubra Pilaris and Pediatric Germ Cell Cancer. An important paralog of this gene is GTSF1L.
Molecular Mass	19.2 kDa
AA Sequence	MEETYTDSLDPKLLQCPYDKNHQIRACRFPYHLIKCRKNHPDVASKLATCPFNARH QVPRAEISHHISCCDDRSCIEQDVVNQTRSLRQETLAESTWQCPCDEDWDKDLW EQTSTPFAWGTTTHYSNNSPASNIVTEHKNNLASGMRVPKSLPYVLPWKNNNGNAQ TRTRPLEQKLISEEDLAANDILDYKDDDDKV
Purity	> 80% as determined by SDS-PAGE and Coomassie blue staining
Stability	Stable for 3 months from receipt of products under proper storage and handling conditions.
Storage	Store at -80 centigrade. Avoid repeated freeze-thaw cycles.

 Tel: 1-631-559-9269 1-516-512-3133

 Email: info@creative-biomart.com  Fax: 1-631-938-8127

 45-1 Ramsey Road, Shirley, NY 11967, USA

Concentration 50 µg/mL as determined by BCA

Storage Buffer 100 mM glycine, 25 mM Tris-HCl, pH 7.3.

GENE INFORMATION

Gene Name [GTSF1 gametocyte specific factor 1 \[Homo sapiens \(human\) \]](#)

Official Symbol [GTSF1](#)

Synonyms GTSF1; gametocyte specific factor 1; FAM112B, family with sequence similarity 112, member B; gametocyte-specific factor 1; FLJ32942; family with sequence similarity 112, member B; FAM112B;


Gene ID [121355](#)

mRNA Refseq [NM_144594](#)

Protein Refseq [NP_653195](#)

MIM [617484](#)

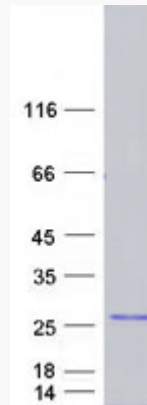
UniProt ID [Q8WW33](#)

 Tel: 1-631-559-9269 1-516-512-3133

 Email: info@creative-biomart.com  Fax: 1-631-938-8127

 45-1 Ramsey Road, Shirley, NY 11967, USA

SDS-PAGE



 Tel: 1-631-559-9269 1-516-512-3133

 Email: info@creative-biomart.com  Fax: 1-631-938-8127

 45-1 Ramsey Road, Shirley, NY 11967, USA