

Recombinant Human GTSF1L protein, His-tagged

Cat. No. GTSF1L-13614H Lot. No. (See product label)

SPECIFICATION

Product Overview	Recombinant Human GTSF1L protein(1-148 aa), fused with N-terminal His tag, was expressed in E.coli.
Species	Human
Source	E.coli
ProteinLength	1-148 aa
Form	The purified protein was Lyophilized from sterile PBS (58mM Na ₂ HPO ₄ , 17mM NaH ₂ PO ₄ , 68mM NaCl, pH7.4). 5 % trehalose and 5 % mannitol are added as protectant before lyophilization. The elution buffer contain 300mM imidazole.
AASequence	MEPEAFEICPYDPHHRIPLSRFQYHLASCRRKNPKKAKKMATCKYNACHVVPIKNLE EHEAVCVNRSASVEEEDTENPLKVSPSPSEQNDTQQVSPCLPSPDIWNVDGANCQ HVFVLKTFPPQKVVCENDTKESARETSPQKILRPGQ
Purity	85%, by SDS-PAGE with Coomassie Brilliant Blue staining.
Storage	Store at 2-8°C for 1-2 weeks. Aliquot and store at -20°C to -80°C for up to 3 months, reconstitution with sterile water and addition of an equal volume of glycerol. Avoid repeat freeze-thaw cycles.
Reconstitution	Dissolve the product in 200 µl sterile water to achieve a working concentration of 0.25 g/µl. If experimental compatibility allows, mix the aqueous solution with an equal

 Tel: 1-631-559-9269 1-516-512-3133

 Email: info@creative-biomart.com  Fax: 1-631-938-8127

 45-1 Ramsey Road, Shirley, NY 11967, USA

volume of glycerol (1:1 ratio) after initial reconstitution.

MIM-Weblink

GENE INFORMATION

Gene Name [GTSF1L gametocyte specific factor 1-like \[Homo sapiens \]](#)

Official Symbol [GTSF1L](#)

Synonyms [gametocyte specific factor 1-like; 16198; Ensembl:ENSG00000124196; MGC50820; gametocyte-specific factor 1-like;family with sequence similarity 112, member A; FAM112A; C20orf65; dJ1028D15.4](#)

Gene ID [149699](#)

mRNA Refseq [NM_001008901.1](#)

Protein Refseq [NP_001008901.1](#)

UniProt ID [Q5JWH5](#)

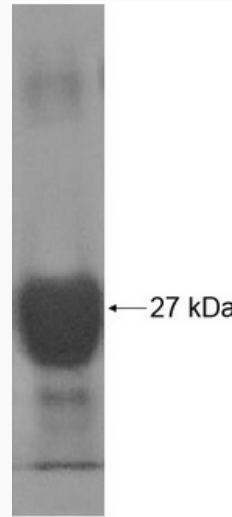
 Tel: 1-631-559-9269 1-516-512-3133

 Email: info@creative-biomart.com  Fax: 1-631-938-8127

 45-1 Ramsey Road, Shirley, NY 11967, USA



SDS-PAGE



Tel: 1-631-559-9269 1-516-512-3133

Email: info@creative-biomart.com Fax: 1-631-938-8127

45-1 Ramsey Road, Shirley, NY 11967, USA