

Recombinant Human GUCA1A Protein, Myc/DDK-tagged, C13 and N15-labeled

Cat. No. GUCA1A-1746H **Lot. No.** (See product label)

SPECIFICATION

Product Overview	GUCA1A MS Standard C13 and N15-labeled recombinant protein (NP_000400) with a C-terminal MYC/DDK tag, was expressed in HEK293 cells.
Species	Human
Source	HEK293
Description	This gene encodes an enzyme that plays a role in the recovery of retinal photoreceptors from photobleaching. This enzyme promotes the activity of retinal guanylyl cyclase-1 (GC1) at low calcium concentrations and inhibits GC1 at high calcium concentrations. Mutations in this gene can cause cone dystrophy 3 and code-rod dystrophy 14. Alternative splicing results in multiple transcript variants.
Molecular Mass	22.9 kDa
AA Sequence	MGNVMEGKSVEELSSTECHQWYKKFMTECPGQLTLYEFRQFFGLKNLSPSASQY VEQMFETFDNFNDGYIDFMEYVAALSLVLKKGVEQKLRWYFKLYDVDGNGCIDRDE LLTIIQAIRAINPCSDTTMTAEFTDVTFSKIDVNGDGELSLEEFIEGVQKQDQMLLDTLT RSLDLTRIVRRLQNGEQDEEGADEAAEAAGTRTRPLEQKLISEEDLAANDILDYKDD DDKV
Purity	> 80% as determined by SDS-PAGE and Coomassie blue staining
Stability	Stable for 3 months from receipt of products under proper storage and handling

 Tel: 1-631-559-9269 1-516-512-3133

 Email: info@creative-biomart.com  Fax: 1-631-938-8127

 45-1 Ramsey Road, Shirley, NY 11967, USA

conditions.

Storage Store at -80 centigrade. Avoid repeated freeze-thaw cycles.

Concentration 50 µg/mL as determined by BCA

Storage Buffer 100 mM glycine, 25 mM Tris-HCl, pH 7.3.

GENE INFORMATION

Gene Name [GUCA1A guanylate cyclase activator 1A \[Homo sapiens \(human\) \]](#)

Official Symbol [GUCA1A](#)

Synonyms GUCA1A; guanylate cyclase activator 1A (retina); C6orf131, chromosome 6 open reading frame 131, GUCA, GUCA1; guanylyl cyclase-activating protein 1; COD3; cone dystrophy 3; dJ139D8.6; GCAP; GCAP1; GCAP 1; guanylin 1, retina; guanylate cyclase-activating protein, photoreceptor 1; GUCA; GUCA1; CORD14; C6orf131;

Gene ID [2978](#)

mRNA Refseq [NM_000409](#)

Protein Refseq [NP_000400](#)

MIM [600364](#)

UniProt ID [P43080](#)

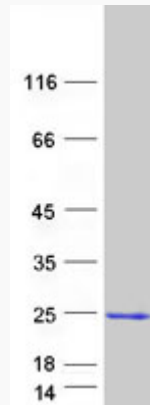
 Tel: 1-631-559-9269 1-516-512-3133

 Email: info@creative-biomart.com  Fax: 1-631-938-8127

 45-1 Ramsey Road, Shirley, NY 11967, USA



SDS-PAGE



Tel: 1-631-559-9269 1-516-512-3133

Email: info@creative-biomart.com Fax: 1-631-938-8127

45-1 Ramsey Road, Shirley, NY 11967, USA