

## Recombinant Human GUCA1B Protein, GST-tagged

Cat. No. GUCA1B-4484H Lot. No. (See product label)

### SPECIFICATION

<b>Product Overview</b>	Human GUCA1B partial ORF ( NP_002089, 93 a.a. - 200 a.a.) recombinant protein with GST-tag at N-terminal.
<b>Species</b>	Human
<b>Source</b>	Wheat Germ
<b>Description</b>	The protein encoded by this gene is a calcium-binding protein that activates photoreceptor guanylate cyclases. This gene may have arisen due to a gene duplication event since there is a highly similar gene clustered with it on chromosome 6. Mutations in this gene can cause a form of retinitis pigmentosa. [provided by RefSeq, Nov 2009]
<b>Molecular Mass</b>	37.62 kDa
<b>AA Sequence</b>	KLKWTFKIYDKDGNCGCIDRLELLNIVEGIYQLKKACRRELQTEQDQLLTPEEVVDRIFL LVDENGDGQLSLNEFVEGARRDKWVMKMLQMDMNPSSWLAQQRRKSAMF
<b>Applications</b>	Enzyme-linked Immunoabsorbent Assay Western Blot (Recombinant protein) Antibody Production Protein Array
<b>Notes</b>	Best use within three months from the date of receipt of this protein.

 Tel: 1-631-559-9269 1-516-512-3133

 Email: [info@creative-biomart.com](mailto:info@creative-biomart.com)  Fax: 1-631-938-8127

 45-1 Ramsey Road, Shirley, NY 11967, USA

**Storage** Store at -8 centigrade. Aliquot to avoid repeated freezing and thawing.

**Storage Buffer** 50 mM Tris-HCl, 10 mM reduced Glutathione, pH=8.0 in the elution buffer.

## GENE INFORMATION

**Gene Name** [GUCA1B guanylate cyclase activator 1B \(retina\) \[ Homo sapiens \]](#)

**Official Symbol** [GUCA1B](#)

**Synonyms** GUCA1B; guanylate cyclase activator 1B (retina); guanylyl cyclase-activating protein 2; GCAP2; GCAP 2; guanylate cyclase-activating protein, photoreceptor 2; RP48; GUCA2; DKFZp686E1183;

**Gene ID** [2979](#)

**mRNA Refseq** [NM\\_002098](#)

**Protein Refseq** [NP\\_002089](#)

**MIM** [602275](#)

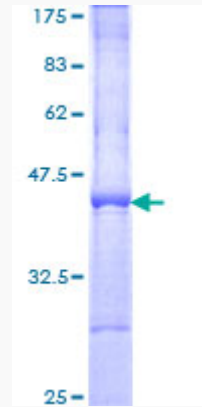
**UniProt ID** [Q9UMX6](#)

 Tel: 1-631-559-9269 1-516-512-3133

 Email: [info@creative-biomart.com](mailto:info@creative-biomart.com)  Fax: 1-631-938-8127

 45-1 Ramsey Road, Shirley, NY 11967, USA

**Quality Control  
Testing**



12.5% SDS-PAGE Stained with Coomassie Blue.

 Tel: 1-631-559-9269 1-516-512-3133

 Email: [info@creative-biomart.com](mailto:info@creative-biomart.com)  Fax: 1-631-938-8127

 45-1 Ramsey Road, Shirley, NY 11967, USA