

Recombinant Mouse GUCA2B Protein (22-106 aa), His-tagged

Cat. No. GUCA2B-1407M Lot. No. (See product label)

SPECIFICATION

Product Overview	Recombinant Mouse GUCA2B Protein (22-106 aa) is produced by Yeast expression system. This protein is fused with a 6xHis tag at the N-terminal. Protein Description: Full Length of Mature Protein.
Species	Mouse
Source	Yeast
ProteinLength	22-106 aa
Description	Endogenous activator of intestinal guanylate cyclase. It stimulates this enzyme through the same receptor binding region as the heat-stable enterotoxins. May be a potent physiological regulator of intestinal fluid and electrolyte transport. May be an autocrine/paracrine regulator of intestinal salt and water transport.
Form	Tris-based buffer,50% glycerol
Molecular Mass	11.4 kDa
AA Sequence	VYIKYHGFQVQLESVKKLNELEEKEMSNPQPRRSGLLPVCHNPALPLDLQPVCAS QEAASTFKALRTIATDECELCINVACTGC
Purity	> 90% as determined by SDS-PAGE.
Notes	Repeated freezing and thawing is not recommended. Store working aliquots at 4

 Tel: 1-631-559-9269 1-516-512-3133

 Email: info@creative-biomart.com  Fax: 1-631-938-8127

 45-1 Ramsey Road, Shirley, NY 11967, USA

centigrade for up to one week.

Storage

The shelf life is related to many factors, storage state, buffer ingredients, storage temperature and the stability of the protein itself. Generally, the shelf life of liquid form is 6 months at -20 centigrade/-80 centigrade. The shelf life of lyophilized form is 12 months at -20 centigrade/-80 centigrade.

Concentration

A hardcopy of COA with reconstitution instruction is sent along with the products.

GENE INFORMATION

Gene Name [Guca2b guanylate cyclase activator 2b \(retina\) \[Mus musculus \]](#)

Official Symbol [GUCA2B](#)

Synonyms [GUCA2B](#); [uroguanylin](#); [Ugn](#); [Gcap2](#); [AV066530](#);

Gene ID [14916](#)

mRNA Refseq [NM_008191](#)

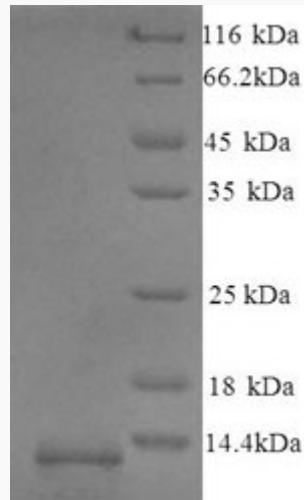
Protein Refseq [NP_032217](#)

UniProt ID [O09051](#)

 Tel: 1-631-559-9269 1-516-512-3133

 Email: info@creative-biomart.com  Fax: 1-631-938-8127

 45-1 Ramsey Road, Shirley, NY 11967, USA



(Tris-Glycine gel) Discontinuous SDS-PAGE (reduced) with 5% enrichment gel and 15% separation gel.

Tel: 1-631-559-9269 1-516-512-3133

Email: info@creative-biomart.com Fax: 1-631-938-8127

45-1 Ramsey Road, Shirley, NY 11967, USA