

## Recombinant Human GUCY1A3 Protein, GST-tagged

Cat. No. GUCY1A3-4489H Lot. No. (See product label)

### SPECIFICATION

<b>Product Overview</b>	Human GUCY1A3 full-length ORF ( AAH28384.1, 1 a.a. - 690 a.a.) recombinant protein with GST-tag at N-terminal.
<b>Species</b>	Human
<b>Source</b>	Wheat Germ
<b>Description</b>	Soluble guanylate cyclase (sGC), a heterodimeric protein consisting of an alpha subunit, such as alpha-1 (GUCY1A3), and a beta subunit, typically beta-1 (GUCY1B3; MIM 139397), catalyzes conversion of GTP to the second messenger cGMP and functions as the main receptor for nitric oxide and nitrovasodilator drugs (Zabel et al., 1998 [PubMed 9742212]).[supplied by OMIM
<b>Molecular Mass</b>	103.9 kDa
<b>AA Sequence</b>	MFCTKLDKDLKITGECPFSLAPGQVPNESSEEAAGSSESCKATMPICQDIPEKNIQES LPQRKTSRSRVYLHTLAESICKLIFPEFERLNVALQRTLAKHKIKESRKSLEREDFEKT IAEQAVAAGVPVEVIKESLGEEVFKICYEEDENILGVVGGTLKDFLNSFSTLLKQSSHC QEAGKRGRLLEDASILCLDKEDDFLHVYFFPKRTTSLILPGIHKAAAHVLYETEVEVSL MPPCFHNDCESEFVNQPYLLYSVHMKSTKPSLSPSKPQSSLVIPSTLFCCKTFPFHFMF DKDMTILQFNGIRRLMNRDFQGKPNFEEYFEILTPKINQTFSGIMTMLNMQFVVR VRRWDNSVKKSSRVMDLKGQMIYIVESSAILFLGSPCVDRLEDFTGRGLYLSDIPIHN ALRDVVLIGEQAQAQDGLKKRLGKLEQAHALEEEKKTVDLLCSIFPCEVAQ QLWQGQVVQAKKFSNVTMLFSDIVGFTAICSQCSPLQVITMLNLYTRFDQQCGEL

 Tel: 1-631-559-9269 1-516-512-3133

 Email: [info@creative-biomart.com](mailto:info@creative-biomart.com)  Fax: 1-631-938-8127

 45-1 Ramsey Road, Shirley, NY 11967, USA

DVYK VETIGDAYCVAGGLHKESDTHAVQIALMAVKMMELSDEVMSPHGEPKMRIGL  
 HSGSVFAGVVGKMPRYCLFGNNVTLANKFESCSVPRKINVSPTTYRLLKDCPGFV  
 FTPRSREELPPNFPSEIPGICHFLDAYQQGTNSKPCFQKKDVEDGNANFLGKASGID

<b>Applications</b>	Enzyme-linked Immunoabsorbent Assay Western Blot (Recombinant protein) Antibody Production Protein Array
<b>Notes</b>	Best use within three months from the date of receipt of this protein.
<b>Storage</b>	Store at -8 centigrade. Aliquot to avoid repeated freezing and thawing.
<b>Storage Buffer</b>	50 mM Tris-HCl, 10 mM reduced Glutathione, pH=8.0 in the elution buffer.

## GENE INFORMATION

<b>Gene Name</b>	<a href="#">GUCY1A3 guanylate cyclase 1, soluble, alpha 3 [ Homo sapiens ]</a>
<b>Official Symbol</b>	<a href="#">GUCY1A3</a>
<b>Synonyms</b>	GUCY1A3; guanylate cyclase 1, soluble, alpha 3; GUC1A3; guanylate cyclase soluble subunit alpha-3; GC SA3; GCS-alpha-1; GCS-alpha-3; GC-S-alpha-1; soluble guanylate cyclase large subunit; GUCA3; GC-SA3; GUCSA3; GUCY1A1;
<b>Gene ID</b>	<a href="#">2982</a>
<b>mRNA Refseq</b>	<a href="#">NM_000856</a>
<b>Protein Refseq</b>	<a href="#">NP_000847</a>

 Tel: 1-631-559-9269 1-516-512-3133

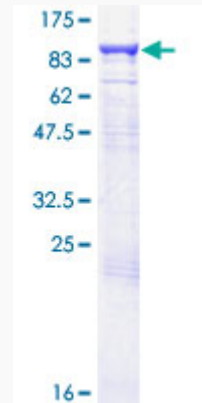
 Email: [info@creative-biomart.com](mailto:info@creative-biomart.com)  Fax: 1-631-938-8127

 45-1 Ramsey Road, Shirley, NY 11967, USA

MIM 139396

UniProt ID Q02108

**Quality Control  
Testing**



12.5% SDS-PAGE Stained with Coomassie Blue.

 Tel: 1-631-559-9269 1-516-512-3133

 Email: [info@creative-biomart.com](mailto:info@creative-biomart.com)  Fax: 1-631-938-8127

 45-1 Ramsey Road, Shirley, NY 11967, USA