

## Recombinant Human GUCY1B3 Protein, GST-tagged

Cat. No. GUCY1B3-4491H Lot. No. (See product label)

### SPECIFICATION

<b>Product Overview</b>	Human GUCY1B3 full-length ORF ( AAH47620, 1 a.a. - 619 a.a.) recombinant protein with GST-tag at N-terminal.
<b>Species</b>	Human
<b>Source</b>	Wheat Germ
<b>Description</b>	Soluble guanylate cyclase (sGC), a heterodimeric protein consisting of an alpha subunit and a beta subunit, typically GUCY1B3, catalyzes conversion of GTP to the second messenger cGMP and functions as the main receptor for nitric oxide (NO) and nitrovasodilator drugs (Zabel et al., 1998 [PubMed 9742212]).[supplied by OMIM
<b>Molecular Mass</b>	93.61 kDa
<b>AA Sequence</b>	<p>MYGFVNHALELLVIRNYGPEVWEDIKKEAQLDEEGQFLVRIIYDDSKTYDLVAAASKV  LNLNAGEILQMFGKMFFVFCQESGYDTILRVLGSNVREFLQNLDALHDHLATIYPGM  RAPSFRCTDAEKGKGLILHYYSERELQDIVIGIIKTVAQQIHGTEIDMKVIQQRNEEC  DHTQFLIEEKESKEEDFYEDLDRFEENGTQESRISPYTFCKAFPFIIFDRDLVVTQC  GNAIYRVLPQLQPGNCSLLSVFSLVRPHIDISFHGILSHINTVFLRSKEGLLDVEKLE  CEDELTGTEISCLRLKGMIIYLPEADSILFLCSPSVMNLDDLTRRGLYLSDIPLHDATR  DLVLLGEQFREEYKLTQELEILTDRLQLTLRALEDEKKKTDLLYSVLPSPVANELRH  KRPVPAKRYDNVTILFSGIVGFNAFCSKHASGEGAMKIVNLLNDLYTRFDTLTDSRKN  PFVYKVETVGDKYMTVSGLPEPCIHHARSICHLALDMMEIAGQVQVDGESVQITIGIH  TGEVVTGVIGQRMPRYCLFGNTVNLTSTRTEETTGEKGINVSEYTYRCLMSPENSDP</p>

 Tel: 1-631-559-9269 1-516-512-3133

 Email: [info@creative-biomart.com](mailto:info@creative-biomart.com)  Fax: 1-631-938-8127

 45-1 Ramsey Road, Shirley, NY 11967, USA

QFHLEHRGPVSMKGGKKEPMQVWFLSRKNTGTEETKQDDD

**Applications**

Enzyme-linked Immunoabsorbent Assay  
 Western Blot (Recombinant protein)  
 Antibody Production  
 Protein Array

**Notes**

Best use within three months from the date of receipt of this protein.

**Storage**

Store at -8 centigrade. Aliquot to avoid repeated freezing and thawing.

**Storage Buffer**

50 mM Tris-HCl, 10 mM reduced Glutathione, pH=8.0 in the elution buffer.

## GENE INFORMATION

**Gene Name**

[GUCY1B3 guanylate cyclase 1, soluble, beta 3 \[ Homo sapiens \]](#)

**Official Symbol**

[GUCY1B3](#)

**Synonyms**

GUCY1B3; guanylate cyclase 1, soluble, beta 3; GUC1B3; guanylate cyclase soluble subunit beta-1; GC S beta 1; GC SB3; GCS-beta-1; GCS-beta-3; soluble guanylate cyclase small subunit; guanylate cyclase soluble subunit beta-3; GUCB3; GC-SB3; GUCSB3; GUCY1B1; GC-S-beta-1;

**Gene ID**

[2983](#)

**mRNA Refseq**

[NM\\_000857](#)

**Protein Refseq**

[NP\\_000848](#)

**MIM**

[139397](#)

 Tel: 1-631-559-9269 1-516-512-3133

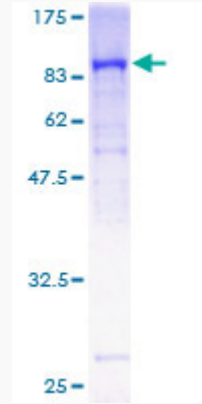
 Email: [info@creative-biomart.com](mailto:info@creative-biomart.com)  Fax: 1-631-938-8127

 45-1 Ramsey Road, Shirley, NY 11967, USA

UniProt ID

Q02153

Quality Control  
Testing



12.5% SDS-PAGE Stained with Coomassie Blue.

 Tel: 1-631-559-9269 1-516-512-3133

 Email: [info@creative-biomart.com](mailto:info@creative-biomart.com)  Fax: 1-631-938-8127

 45-1 Ramsey Road, Shirley, NY 11967, USA