

Recombinant Human GUCY2C Protein, His-tagged

Cat. No. GUCY2C-01H Lot. No. (See product label)

SPECIFICATION

Product Overview	Recombinant Human GUCY2C Protein, fused to His-tag, was expressed in Human cells.
Species	Human
Source	Human Cells
Description	This gene encodes a transmembrane protein that functions as a receptor for endogenous peptides guanylin and uroguanylin, and the heat-stable E. coli enterotoxin. The encoded protein activates the cystic fibrosis transmembrane conductance regulator. Mutations in this gene are associated with familial diarrhea (autosomal dominant) and meconium ileus (autosomal recessive).
Form	Supplied as a 0.2 µm filtered solution in PBS (pH 7.4).
AA Sequence	SQVSNCHNGSYEISVLMMGNSAFAEPLKNLEDAVNEGLEIVRGRQLQAGLNVTVN ATFMYS DGLIHNSGDCRSSTCEGLDLLRKISNAQRMGCVLIGPSCYSTYTFQMYLDTE LSYPMISAGSFGLSCDYKETLTRLMS PARKLMYFLVNFWKTNLDPFKTYSWSTSYVY KNGTETEDCFWYLNAL EASVSYFSHELGFKV VLRQDKEFQDILMDHNRKSNVIIMCG GPEFLYK LKGDRAVAEDIV IILVDLFNDQYFEDNVTAPDYMKNVLVLT LSPGN SLLNS SFSRNLSP TKRDFALAYLNGILLFGHMLKIFLENGENITTPKFAHAFRNLTFEGYDGP VTLDDWGDVDSTMVLLYTSVDTKKYK VLLTYDTHVNKTYPVDMSPFTFWKNSKLPN DITGRGPQH HHHHHHHHHH
Endotoxin	<1.0EU per 1ml (determined by the LAL method)

 Tel: 1-631-559-9269 1-516-512-3133

 Email: info@creative-biomart.com  Fax: 1-631-938-8127

 45-1 Ramsey Road, Shirley, NY 11967, USA

Purity >90%, by SDS-PAGE

Storage Store it under sterile conditions at -20 centigrade to -80 centigrade. It is recommended that the protein be aliquoted for optimal storage. Avoid repeated freeze-thaw cycles.

Concentration 1.0 mg/ml

GENE INFORMATION

Gene Name GUCY2C guanylate cyclase 2C [Homo sapiens (human)]

Official Symbol GUCY2C

Synonyms GCC; GC-C; HSER; STAR; DIAR6; GUC2C; MECIL; MUCIL

Gene ID 2984

mRNA Refseq NM_004963.4

Protein Refseq NP_004954.2

MIM 601330

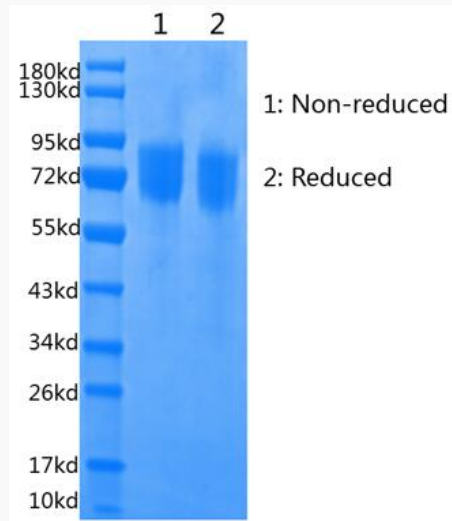
UniProt ID P25092

 Tel: 1-631-559-9269 1-516-512-3133

 Email: info@creative-biomart.com  Fax: 1-631-938-8127

 45-1 Ramsey Road, Shirley, NY 11967, USA

SDS-PAGE



SDS-PAGE analysis of purified human GUCY2C 3 ug/Line, Reduced.

 Tel: 1-631-559-9269 1-516-512-3133

 Email: info@creative-biomart.com  Fax: 1-631-938-8127

 45-1 Ramsey Road, Shirley, NY 11967, USA