

Recombinant Human GUCY2C protein, His-Avi-tagged

Cat. No. GUCY2C-092H Lot. No. (See product label)

SPECIFICATION

Product Overview	Recombinant Human GUCY2C protein(P25092-1)(Ser24-Gln430), fused with C-terminal His and Avi tag, was expressed in HEK293.
Species	Human
Source	HEK293
ProteinLength	Ser24-Gln430
Tag	C-His-Avi
Form	Lyophilized from 0.22µm filtered solution in PBS (pH 7.4). Normally 5% trehalose is added as protectant before lyophilization.
Bio-activity	Immobilized Human GUCY2C, His Tag at 5ug/ml (100ul/well) on the plate. Dose response curve for Anti-GUCY2C Antibody, hFc Tag with the EC50 of 8.9ng/ml determined by ELISA.
Molecular Mass	The protein has a predicted MW of 48.8 kDa. Due to glycosylation, the protein migrates to 70-80 kDa based on Tris-Bis PAGE result.
Endotoxin	Less than 1EU per µg by the LAL method.
Purity	> 95% as determined by Tris-Bis PAGE;> 95% as determined by HPLC

 Tel: 1-631-559-9269 1-516-512-3133

 Email: info@creative-biomart.com  Fax: 1-631-938-8127

 45-1 Ramsey Road, Shirley, NY 11967, USA

Storage Reconstituted protein stable at -80°C for 12 months, 4°C for 1 week. Use a manual defrost freezer and avoid repeated freeze-thaw cycles.

Reconstitution Centrifuge tubes before opening. Reconstituting to a concentration more than 100 µg/ml is recommended. Dissolve the lyophilized protein in distilled water.

GENE INFORMATION

Gene Name [GUCY2C guanylate cyclase 2C \(heat stable enterotoxin receptor\) \[Homo sapiens \]](#)

Official Symbol [GUCY2C](#)

Synonyms GUCY2C; guanylate cyclase 2C (heat stable enterotoxin receptor); GUC2C; heat-stable enterotoxin receptor; STAR; GC-C; hSTAR; STA receptor; guanylyl cyclase C; intestinal guanylate cyclase;

Gene ID [2984](#)

mRNA Refseq [NM_004963](#)

Protein Refseq [NP_004954](#)

MIM [601330](#)

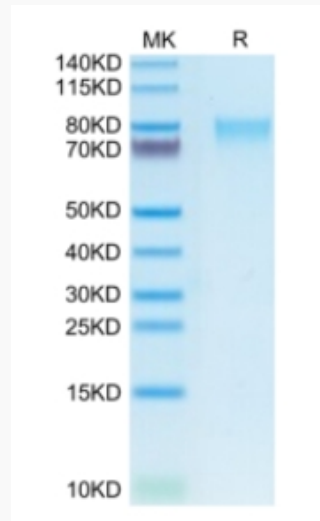
UniProt ID [P25092](#)

 Tel: 1-631-559-9269 1-516-512-3133

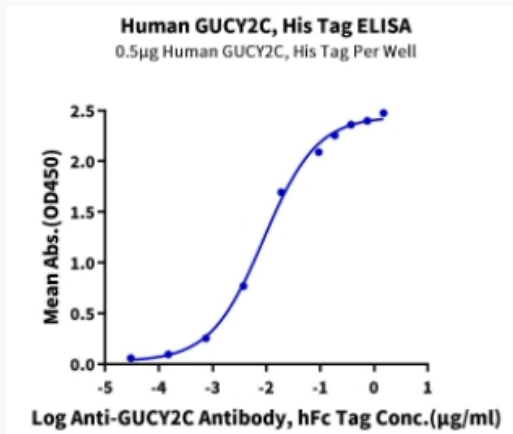
 Email: info@creative-biomart.com  Fax: 1-631-938-8127

 45-1 Ramsey Road, Shirley, NY 11967, USA

Tris-Bis PAGE



ELISA Data



 Tel: 1-631-559-9269 1-516-512-3133

 Email: info@creative-biomart.com  Fax: 1-631-938-8127

 45-1 Ramsey Road, Shirley, NY 11967, USA