

Recombinant Rat GUCY2C Protein (23-429 aa), His-Myc-tagged

Cat. No. GUCY2C-2582R Lot. No. (See product label)

SPECIFICATION

Product Overview	Recombinant Rat GUCY2C Protein (23-429 aa) is produced by Yeast expression system. This protein is fused with a 6xHis tag at the N-terminal and a Myc tag at the C-terminal. Research Area: Microbiology. Protein Description: Partial.
Species	Rat
Source	Yeast
ProteinLength	23-429 aa
Description	Receptor for the E.coli heat-stable enterotoxin (E.coli enterotoxin markedly stimulates the accumulation of cGMP in mammalian cells expressing GC-C). Also activated by the endogenous peptide guanylin.
Form	Tris-based buffer,50% glycerol
Molecular Mass	49.9 kDa
AA Sequence	SQVRQKCHNGTYEISVLMMDNSAYKEPLQNLRDAVEEGLDIVRKRLREAELNVTVN ATFIYSDGLIHKSGDCRSSTCEGLDLLREITRDRKMGCVLMGPSCTYSTFQMYLDTE LNYPMISAGSFGSLSCDYKETLTRILPPARKLMYFLVDFWKVNNAPFKTFSWNSSYVY KNGSEPEDCFWYLNALAEAGVSYFSEVLSFKDVLRRSEQFQEILMGRNRKSNVIVMC GTPETFYNVKGDLKVADDTVVILVDLFSNHYFEDDTRAPEYMDNVLVLTLPPEKFIAN ASVSGRFPSESRSDFLAYLEGTLFGHMLQTFLENGESVTTPKFARAFRNLTFFQGLE GPVTLDDSGDIDNIMCLLYVSLDTRKYKVLMAVDTHKNQTIPVATSPNFIWKNHRLPN

 Tel: 1-631-559-9269 1-516-512-3133

 Email: info@creative-biomart.com  Fax: 1-631-938-8127

 45-1 Ramsey Road, Shirley, NY 11967, USA

	DVPGLGPQ
Purity	> 90% as determined by SDS-PAGE.
Notes	Repeated freezing and thawing is not recommended. Store working aliquots at 4 centigrade for up to one week.
Storage	The shelf life is related to many factors, storage state, buffer ingredients, storage temperature and the stability of the protein itself. Generally, the shelf life of liquid form is 6 months at -20 centigrade/-80 centigrade. The shelf life of lyophilized form is 12 months at -20 centigrade/-80 centigrade.
Concentration	A hardcopy of COA will be sent along with the products. Please refer to it for detailed information.

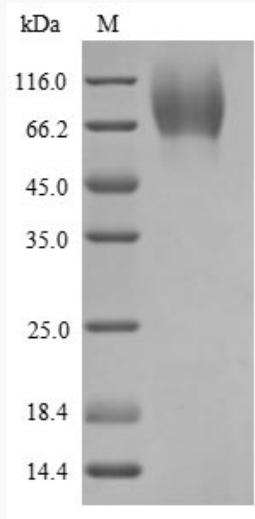
GENE INFORMATION

Gene Name	Gucy2c guanylate cyclase 2C [Rattus norvegicus]
Official Symbol	GUCY2C
Synonyms	GUCY2C; guanylate cyclase 2C; GC-C; STA receptor; guanylyl cyclase C; GCC;
Gene ID	25711
mRNA Refseq	NM_013170
Protein Refseq	NP_037302
UniProt ID	P23897

 Tel: 1-631-559-9269 1-516-512-3133

 Email: info@creative-biomart.com  Fax: 1-631-938-8127

 45-1 Ramsey Road, Shirley, NY 11967, USA



(Tris-Glycine gel) Discontinuous SDS-PAGE (reduced) with 5% enrichment gel and 15% separation gel.

 Tel: 1-631-559-9269 1-516-512-3133

 Email: info@creative-biomart.com  Fax: 1-631-938-8127

 45-1 Ramsey Road, Shirley, NY 11967, USA