

Recombinant Human GUCY2C Protein, GST-tagged

Cat. No. GUCY2C-4492H **Lot. No.** (See product label)

SPECIFICATION

Product Overview	Human GUCY2C partial ORF (NP_004954, 24 a.a. - 133 a.a.) recombinant protein with GST-tag at N-terminal.
Species	Human
Source	Wheat Germ
Description	This gene encodes a transmembrane protein that functions as a receptor for endogenous peptides guanylin and uroguanylin, and the heat-stable E. coli enterotoxin. The encoded protein activates the cystic fibrosis transmembrane conductance regulator. Mutations in this gene are associated with familial diarrhea (autosomal dominant) and meconium ileus (autosomal recessive). [provided by RefSeq, Nov 2016]
Molecular Mass	37.73 kDa
AA Sequence	SQVSNCHNGSYEISVLMMGNSAFAEPLKNLEDAVNEGLEIVRGRLQNAGLNVTVN ATFMYS DGLIHNSGDCRSSTCEGLDLLRKISNAQRMGCVLIGPSTYSTFQMYL
Applications	Enzyme-linked Immunoabsorbent Assay Western Blot (Recombinant protein) Antibody Production Protein Array
Notes	Best use within three months from the date of receipt of this protein.

 Tel: 1-631-559-9269 1-516-512-3133

 Email: info@creative-biomart.com  Fax: 1-631-938-8127

 45-1 Ramsey Road, Shirley, NY 11967, USA

Storage Store at -8 centigrade. Aliquot to avoid repeated freezing and thawing.

Storage Buffer 50 mM Tris-HCl, 10 mM reduced Glutathione, pH=8.0 in the elution buffer.

GENE INFORMATION

Gene Name [GUCY2C guanylate cyclase 2C \(heat stable enterotoxin receptor\) \[Homo sapiens \]](#)

Official Symbol [GUCY2C](#)

Synonyms GUCY2C; guanylate cyclase 2C (heat stable enterotoxin receptor); GUC2C; heat-stable enterotoxin receptor; STAR; GC-C; hSTAR; STA receptor; guanylyl cyclase C; intestinal guanylate cyclase;

Gene ID [2984](#)

mRNA Refseq [NM_004963](#)

Protein Refseq [NP_004954](#)

MIM [601330](#)

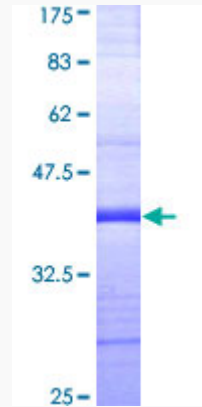
UniProt ID [P25092](#)

 Tel: 1-631-559-9269 1-516-512-3133

 Email: info@creative-biomart.com  Fax: 1-631-938-8127

 45-1 Ramsey Road, Shirley, NY 11967, USA

**Quality Control
Testing**



12.5% SDS-PAGE Stained with Coomassie Blue.

 Tel: 1-631-559-9269 1-516-512-3133

 Email: info@creative-biomart.com  Fax: 1-631-938-8127

 45-1 Ramsey Road, Shirley, NY 11967, USA