

## Recombinant Human GUCY2C protein, Fc-tagged

**Cat. No.** GUCY2C-669H    **Lot. No.** (See product label)

### SPECIFICATION

<b>Product Overview</b>	Recombinant Human GUCY2C protein (Ser24-Gln430) was fused to human IgG1 Fc tag at the C-terminus and expressed in human 293 cells (HEK293).
<b>Species</b>	Human
<b>Source</b>	HEK293
<b>ProteinLength</b>	Ser24-Gln430
<b>Description</b>	GUCY2C (Guanylyl Cyclase C), also known as heat-stable enterotoxin receptor, is a type I transmembrane protein of the guanylate cyclase (gc) family that signal by producing cGMP. Guanylate cyclase C (GUCY2C) and its hormones guanylin and uroguanylin have recently emerged as one paracrine axis defending intestinal mucosal integrity against mutational, chemical, and inflammatory injury. GUCY2C murine CAR-T cells recognized and killed human colorectal cancer cells endogenously expressing GUCY2C. Thus, we have identified a human GUCY2C-specific CAR-T cell therapy approach that may be developed for the treatment of GUCY2C-expressing metastatic colorectal cancer.
<b>Predicted N Terminal</b>	Ser24
<b>Form</b>	Lyophilized from 0.22 µm filtered solution in 50 mM Tris, 100 mM Glycine, 150 mM NaCl, pH7.5, 10% trehalose.
<b>Molecular Mass</b>	The protein has a calculated MW of 72.5 kDa. The protein migrates as 80-130 kDa

 Tel: 1-631-559-9269    1-516-512-3133

 Email: [info@creative-biomart.com](mailto:info@creative-biomart.com)     Fax: 1-631-938-8127

 45-1 Ramsey Road, Shirley, NY 11967, USA

	under reducing (R) condition (SDS-PAGE) due to glycosylation.
<b>Endotoxin</b>	Less than 1.0 EU per µg by the LAL method.
<b>Purity</b>	>95% as determined by SDS-PAGE.
<b>Storage</b>	<p>For long term storage, the product should be stored at lyophilized state at -20°C or lower.</p> <p>Please avoid repeated freeze-thaw cycles.</p> <p>This product is stable after storage at:</p> <p>-20°C to -70°C for 12 months in lyophilized state;</p> <p>-70°C for 3 months under sterile conditions after reconstitution.</p>
<b>Reconstitution</b>	It is recommended that sterile water be added to the vial to prepare a stock solution of 0.2 mg/ml. Centrifuge the vial at 4°C before opening to recover the entire contents.

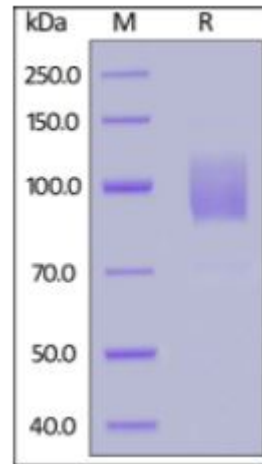
## GENE INFORMATION

<b>Gene Name</b>	GUCY2C
<b>Official Symbol</b>	GUCY2C
<b>Synonyms</b>	GUCY2C,GUC2C,STAR,STA receptor,hSTAR,GC-C
<b>Gene ID</b>	2984
<b>mRNA Refseq</b>	NM_004963.4
<b>Protein Refseq</b>	NP_004954.2
<b>MIM</b>	601330

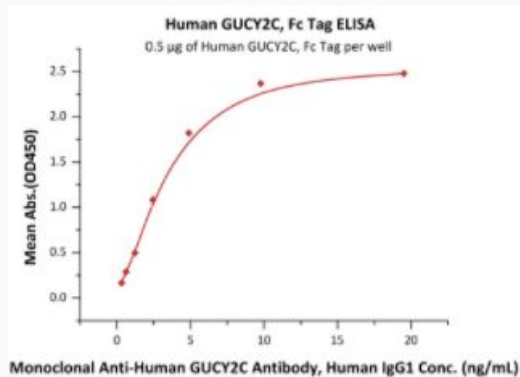
 Tel: 1-631-559-9269 1-516-512-3133

 Email: [info@creative-biomart.com](mailto:info@creative-biomart.com)  Fax: 1-631-938-8127

 45-1 Ramsey Road, Shirley, NY 11967, USA

**UniProt ID**
**P25092**
**SDS-PAGE of  
GUCY2C-669H**


Human GUCY2C, Fc Tag on SDS-PAGE under reducing (R) condition. The gel was stained overnight with Coomassie Blue. The purity of the protein is greater than 95%.

**Bioactivity-ELISA of  
GUCY2C-669H**


Immobilized Human GUCY2C, Fc Tag at 5 µg/mL (100 µL/well) can bind Monoclonal Anti-Human GUCY2C Antibody, Human IgG1 with a linear range of 0.3-

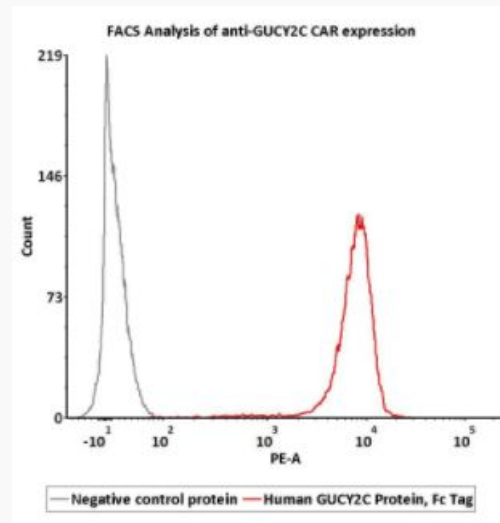
 Tel: 1-631-559-9269 1-516-512-3133

 Email: [info@creative-biomart.com](mailto:info@creative-biomart.com)  Fax: 1-631-938-8127

 45-1 Ramsey Road, Shirley, NY 11967, USA

5 ng/mL (QC tested).

**Bioactivity-FACS of  
GUCY2C-669H**



2e5 of anti-GUCY2C CAR-293 cells were stained with 100  $\mu$  of 1 g/mL Human GUCY2C, Fc Tag and negative control protein respectively, washed and then followed by PE anti-human IgG Fc and analyzed with FACS (Routinely tested).

 Tel: 1-631-559-9269 1-516-512-3133

 Email: [info@creative-biomart.com](mailto:info@creative-biomart.com)  Fax: 1-631-938-8127

 45-1 Ramsey Road, Shirley, NY 11967, USA