

Recombinant Mouse GUCY2C Protein, His-tagged

Cat. No. GUCY2C-7391M Lot. No. (See product label)

SPECIFICATION

Product Overview	Recombinant Mouse Gucy2c Protein, fused to His-tag, was expressed in Human cells.
Species	Mouse
Source	Human Cells
Description	Enables guanylate cyclase activity. Acts upstream of or within regulation of cell population proliferation and response to toxic substance. Predicted to be located in endoplasmic reticulum and membrane. Predicted to be integral component of membrane. Predicted to be active in plasma membrane. Is expressed in alimentary system and liver. Used to study abdominal obesity-metabolic syndrome and obesity. Human ortholog(s) of this gene implicated in congenital diarrhea 6. Orthologous to human GUCY2C (guanylate cyclase 2C).
Form	Supplied as a 0.2 µm filtered solution in PBS (pH 7.4).
AA Sequence	VFWASQVRQNCRNNGSYEISVLMMDNSAYKEPMQNLREAVEEGLDIVRKRLREADL NVTVNATFIYS DGLIHKSGDCRSSTCEGLDLLREITRDHKMGALMGPSCTYSTFQM YLDTELNYPMISAGSYGLSCDYKETLTRILPPARKLMYFLVDFWKVNNASF KPFSWN SSVYKNGSEPEDCFWYLNAL EAGVS YFSEVLNFKDVLRRSEQFQEILTGHNRKSN VIVMCGTPESFYDVKGDLQVAEDTVVILVDLFSNH YFEENTTAPEYMDNVLVLTLPSE QSTSNTSVAERFSSGRSDFSLAYLEGTLLFGHMLQTFL ENGENVTGPKFARAFRNL TFQGFAGPVTLD DSGDIDNIMSLLYVSLDTRKYKVL MKYDTHKNKTIPVAENPNFIWK

 Tel: 1-631-559-9269 1-516-512-3133

 Email: info@creative-biomart.com  Fax: 1-631-938-8127

 45-1 Ramsey Road, Shirley, NY 11967, USA

NHKLPNDVPGLGPQILM HHHHHHHHHH

Purity >90% by SDS-PAGE

Storage Store it under sterile conditions at -20 centigrade to -80 centigrade. It is recommended that the protein be aliquoted for optimal storage. Avoid repeated freeze-thaw cycles.

Concentration 1.0 mg/ml

GENE INFORMATION

Gene Name [Gucy2c guanylate cyclase 2c \[Mus musculus \(house mouse\) \]](#)

Official Symbol [GUCY2C](#)

Synonyms Gcc; GC-C

Gene ID [14917](#)

mRNA Refseq [NM_145067.3](#)

Protein Refseq [NP_659504.2](#)

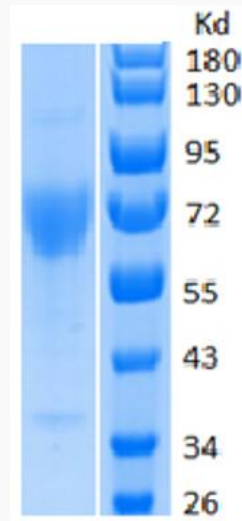
UniProt ID [Q3UWA6](#)

 Tel: 1-631-559-9269 1-516-512-3133

 Email: info@creative-biomart.com  Fax: 1-631-938-8127

 45-1 Ramsey Road, Shirley, NY 11967, USA

SDS-PAGE



SDS-PAGE analysis of purified human GUCY2C 3 ug/Line, Reduced.

 Tel: 1-631-559-9269 1-516-512-3133

 Email: info@creative-biomart.com  Fax: 1-631-938-8127

 45-1 Ramsey Road, Shirley, NY 11967, USA