

Recombinant Full Length Human GUCY2D Protein, C-Flag-tagged

Cat. No. GUCY2D-1540HFL **Lot. No.** (See product label)

SPECIFICATION

Product Overview	Recombinant Full Length Human GUCY2D Protein, fused to Flag-tag at C-terminus, was expressed in Mammalian cells.
Species	Human
Source	Mammalian Cells
Description	This gene encodes a retina-specific guanylate cyclase, which is a member of the membrane guanylyl cyclase family. Like other membrane guanylyl cyclases, this enzyme has a hydrophobic amino-terminal signal sequence followed by a large extracellular domain, a single membrane spanning domain, a kinase homology domain, and a guanylyl cyclase catalytic domain. In contrast to other membrane guanylyl cyclases, this enzyme is not activated by natriuretic peptides. Mutations in this gene result in Leber congenital amaurosis and cone-rod dystrophy-6 diseases.
Form	25 mM Tris HCl, pH 7.3, 100 mM glycine, 10% glycerol.
Molecular Mass	119.9 kDa
AA Sequence	MTACARRAGGLPDPGLCGPAWWAPSLPRLPRALPRLPLLLLLLLLLLQPPALSAVFTVG VLGPWACDPIFSR ARPDLAARLAAARLNDRPGLAGGPRFEVALLPEPCRTPGSLGA VSSALARVSGLVGPVNPAACRPAELLA EEAGIALVPWGCPWTQAEGTTAPAVTPAA DALYALLRAFGWARVALVTAPQDLWVEAGRSLSTALRARGL PVASVTSMEPLDLSG AREALRKVRDGPRTAVIMVMHSVLLGGEEQRYLLEAAEELGLTDGSLVFLPFDT IH

 Tel: 1-631-559-9269 1-516-512-3133

 Email: info@creative-biomart.com  Fax: 1-631-938-8127

 45-1 Ramsey Road, Shirley, NY 11967, USA

YALSPGPEALAAALANSSQLRRAHDAVLTLTRHCPSEGSVLDLRRRAQERRELP
 NLQQVSPPLFGTI YDAVFLARGVAEAAAAAGGRWVSGAAVARHIRDAQVPGFCGD
 LGGDEEPPFVLLDTDAAGDRLFATYML DPARGSFSLSAGTRMHFPRGGSAPGPDPS
 CWFDPNNICGGGLEPGLVFLGFLLVVGMGLAGAFLAHYVRHR LLHMQMVSGPNKII
 LTVDDITFLPHGGTSRKVAQGSRSSLGARSMSDIRSGPSQHLDSPNIGVYEGDRV
 WLKFKPGDQHIAIRPATKTAFAFKLQELRHENVALYLGLFLARGAEGPAALWEGNLAV
 VSEHCTRGS LQDL LAQREIKLDWMFKSSLLLDLIKIRYLHHRGV AHGRLKSRNCIV
 DGRFVLKITDHGHGRLLLEAQKVLPEP PRAEDQLWTAPELLRDPALERRGTLAGDVF
 SLAIIMQEVVCRSAPYAMLELTPEEVVQVRVSPPLCRPL VSMDQAPVECILLMKQC
 WAEQPELRPSMDHTFDLDFKNINKGRKTNII DSMLRMLEQYSSNLEDLIRERTE ELEL
 EKQKTDRLLTQMLPPSVAEALKTGTPVEPEYFEQVTLYFSDIVGFTTISAMSEPIEVV
 DLLNDLYT LFDIIGSHDVYK VETIGDAYMVASGLPQRNGQRHAAEIANMSLDILSAV
 GTFMRHMPEVPVIRIRIGLH SGPCVAGVVGLTMPRYCLFGDVTNTASRMESTGLP
 YRIHVNLSTVGILRALDSGYQVELRGRTELKKGKA
 EDTFWLVGRRGFNKPIPKPPDLQPGSSNHGISLQEIPPERRRKLEKARPGQFSTRTR
 PLEQKLISEEDLAANDILDYKDDDDKV

Purity	> 80% as determined by SDS-PAGE and Coomassie blue staining.
Stability	Stable for 12 months from the date of receipt of the product under proper storage and handling conditions. Avoid repeated freeze-thaw cycles.
Storage	Store at -80 centigrade.
Concentration	>50 ug/mL as determined by microplate BCA method.
Preparation	Recombinant protein was captured through anti-DDK affinity column followed by conventional chromatography steps.
Protein Families	Druggable Genome, Protein Kinase, Transmembrane

 Tel: 1-631-559-9269 1-516-512-3133

 Email: info@creative-biomart.com  Fax: 1-631-938-8127

 45-1 Ramsey Road, Shirley, NY 11967, USA

Protein Pathways Olfactory transduction, Purine metabolism

Full Length Full L.

GENE INFORMATION

Gene Name [GUCY2D guanylate cyclase 2D, retinal \[Homo sapiens \(human\) \]](#)

Official Symbol [GUCY2D](#)

Synonyms LCA; CG-E; CYGD; LCA1; RCD2; CACD1; CORD5; CORD6; GUC2D; ROSGC; retGC; CSNB1I; GUC1A4; RETGC-1; ROS-GC1

Gene ID [3000](#)

mRNA Refseq [NM_000180.4](#)

Protein Refseq [NP_000171.1](#)

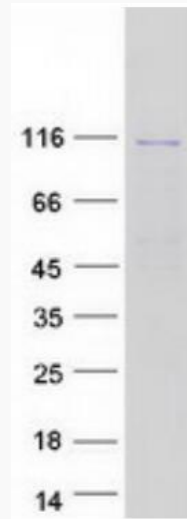
MIM [600179](#)

UniProt ID [Q02846](#)

 Tel: 1-631-559-9269 1-516-512-3133

 Email: info@creative-biomart.com  Fax: 1-631-938-8127

 45-1 Ramsey Road, Shirley, NY 11967, USA



Coomassie blue staining of purified GUCY2D protein.

 Tel: 1-631-559-9269 1-516-512-3133

 Email: info@creative-biomart.com  Fax: 1-631-938-8127

 45-1 Ramsey Road, Shirley, NY 11967, USA