

Recombinant Human GUCY2D Protein, GST-tagged

Cat. No. GUCY2D-4493H Lot. No. (See product label)

SPECIFICATION

Product Overview	Human GUCY2D partial ORF (NP_000171, 521 a.a. - 630 a.a.) recombinant protein with GST-tag at N-terminal.
Species	Human
Source	Wheat Germ
Description	<p>This gene encodes a retina-specific guanylate cyclase, which is a member of the membrane guanylyl cyclase family. Like other membrane guanylyl cyclases, this enzyme has a hydrophobic amino-terminal signal sequence followed by a large extracellular domain, a single membrane spanning domain, a kinase homology domain, and a guanylyl cyclase catalytic domain. In contrast to other membrane guanylyl cyclases, this enzyme is not activated by natriuretic peptides. Mutations in this gene result in Leber congenital amaurosis and cone-rod dystrophy-6 diseases. [provided by RefSeq]</p>
Molecular Mass	37.73 kDa
AA Sequence	RKVAQGSRSSLGARSMSDIRSGPSQHLDSPNIGVYEGDRVWLKKFPGDQHIAIRPA TKTAFSKLQELRHENVALYLGLFLARGAEGPAALWEGNLAVVSEHCTRGLQDL
Applications	<p>Enzyme-linked Immunoabsorbent Assay Western Blot (Recombinant protein) Antibody Production Protein Array</p>

 Tel: 1-631-559-9269 1-516-512-3133

 Email: info@creative-biomart.com  Fax: 1-631-938-8127

 45-1 Ramsey Road, Shirley, NY 11967, USA

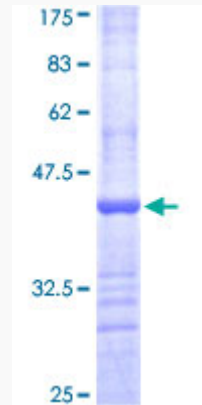
Notes	Best use within three months from the date of receipt of this protein.
Storage	Store at -8 centigrade. Aliquot to avoid repeated freezing and thawing.
Storage Buffer	50 mM Tris-HCl, 10 mM reduced Glutathione, pH=8.0 in the elution buffer.
GENE INFORMATION	
Gene Name	GUCY2D guanylate cyclase 2D, membrane (retina-specific) [Homo sapiens]
Official Symbol	GUCY2D
Synonyms	GUCY2D; guanylate cyclase 2D, membrane (retina-specific); cone rod dystrophy 5/6 , CORD5, CORD6, GUC1A4, GUC2D, LCA; retinal guanylyl cyclase 1; CYGD; LCA1; retGC; RETGC 1; ROS GC1; ROS-GC; guanylate cyclase 2D, retinal; rod outer segment membrane guanylate cyclase; LCA; RCD2; CORD5; CORD6; GUC2D; ROSGC; GUC1A4; RETGC-1; ROS-GC1;
Gene ID	3000
mRNA Refseq	NM_000180
Protein Refseq	NP_000171
MIM	600179
UniProt ID	Q02846

 Tel: 1-631-559-9269 1-516-512-3133

 Email: info@creative-biomart.com  Fax: 1-631-938-8127

 45-1 Ramsey Road, Shirley, NY 11967, USA

**Quality Control
Testing**



12.5% SDS-PAGE Stained with Coomassie Blue.

 Tel: 1-631-559-9269 1-516-512-3133

 Email: info@creative-biomart.com  Fax: 1-631-938-8127

 45-1 Ramsey Road, Shirley, NY 11967, USA