

Recombinant Human GUK1 Protein, Myc/DDK-tagged, C13 and N15-labeled

Cat. No. GUK1-5223H **Lot. No.** (See product label)

SPECIFICATION

Product Overview	GUK1 MS Standard C13 and N15-labeled recombinant protein (NP_000849) with a C-terminal MYC/DDK tag, was expressed in HEK293 cells.
Species	Human
Source	HEK293
Description	The protein encoded by this gene is an enzyme that catalyzes the transfer of a phosphate group from ATP to guanosine monophosphate (GMP) to form guanosine diphosphate (GDP). The encoded protein is thought to be a good target for cancer chemotherapy. Several transcript variants encoding different isoforms have been found for this gene.
Molecular Mass	21.7 kDa
AA Sequence	MSGPRPVVLSGSPGAGKSTLLKRLQLQEHSGIFGFSVSHTRNPRPGEENGKDYFV TREV MQRDIAAGDFIEHAEFSGNLYGTSKVAVQAVQAMNRCVLDVLDLQGVRNIKAT DLRPIYISVQPPSLHVLEQRLRQRNTEETESLVKRLAAAQADMESKEPGLFDVVIIN DSLDQAYAE LKEALSEEIKKAQRTGATRTRPLEQKLISEEDLAANDILDYKDDDDKV
Purity	> 80% as determined by SDS-PAGE and Coomassie blue staining
Stability	Stable for 3 months from receipt of products under proper storage and handling conditions.

 Tel: 1-631-559-9269 1-516-512-3133

 Email: info@creative-biomart.com  Fax: 1-631-938-8127

 45-1 Ramsey Road, Shirley, NY 11967, USA

Storage	Store at -80 centigrade. Avoid repeated freeze-thaw cycles.
----------------	---

Concentration	50 µg/mL as determined by BCA
----------------------	-------------------------------

Storage Buffer	100 mM glycine, 25 mM Tris-HCl, pH 7.3.
-----------------------	---

GENE INFORMATION

Gene Name	GUK1 guanylate kinase 1 [Homo sapiens (human)]
------------------	--

Official Symbol	GUK1
------------------------	------

Synonyms	GUK1; guanylate kinase 1; guanylate kinase; GMP kinase; ATP:GMP phosphotransferase; GMK; FLJ42686; FLJ43710;
-----------------	--

Gene ID	2987
----------------	------

mRNA Refseq	NM_000858
--------------------	-----------

Protein Refseq	NP_000849
-----------------------	-----------

MIM	139270
------------	--------

UniProt ID	Q16774
-------------------	--------

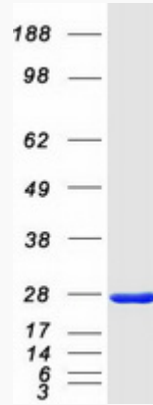
 Tel: 1-631-559-9269 1-516-512-3133

 Email: info@creative-biomart.com  Fax: 1-631-938-8127

 45-1 Ramsey Road, Shirley, NY 11967, USA



SDS-PAGE



Tel: 1-631-559-9269 1-516-512-3133

Email: info@creative-biomart.com Fax: 1-631-938-8127

45-1 Ramsey Road, Shirley, NY 11967, USA