

# Recombinant Human GULP1 Protein, Myc/DDK-tagged, C13 and N15-labeled

Cat. No. GULP1-4410H Lot. No. (See product label)

## SPECIFICATION

<b>Product Overview</b>	GULP1 MS Standard C13 and N15-labeled recombinant protein (NP_057399) with a C-terminal MYC/DDK tag, was expressed in HEK293 cells.
<b>Species</b>	Human
<b>Source</b>	HEK293
<b>Description</b>	The protein encoded by this gene is an adapter protein necessary for the engulfment of apoptotic cells by phagocytes. Several transcript variants, some protein coding and some thought not to be protein coding, have been found for this gene.
<b>Molecular Mass</b>	34.3 kDa
<b>AA Sequence</b>	MNRAFSRKKDKTWMHTPEALSKHFIPYNAKFLGSTEVEQPKGTEVVRDAVRKLFARHIKKSEGQKIPKVELQISYGVKILEPKTKEVQHNCQLHRISFCADDKTDKRIFTFICKDSESNKHLICYVFDSEKCAEEITLTIGQAFDLAYRKFLESGGKDVETRKQIAGLQKRIQDLETENMELKNKVQDLENQLRITQVSAPPAGSMTPKSPSTDIFDMIPFSPISHQSSMPTRNGTQPPPVPSRSTEIKRDLFGAEPFDPFNCGAADFPPDIQSKLDEMQUEGFKMGLTLEGTVFCLDPLDSRCTRTRPLEQKLISEEDLAANDILDYKDDDDKV
<b>Purity</b>	> 80% as determined by SDS-PAGE and Coomassie blue staining
<b>Stability</b>	Stable for 3 months from receipt of products under proper storage and handling conditions.

 Tel: 1-631-559-9269 1-516-512-3133

 Email: [info@creative-biomart.com](mailto:info@creative-biomart.com)  Fax: 1-631-938-8127

 45-1 Ramsey Road, Shirley, NY 11967, USA

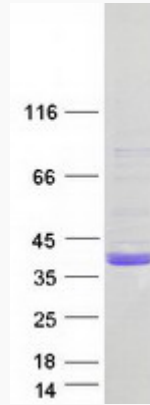
<b>Storage</b>	Store at -80 centigrade. Avoid repeated freeze-thaw cycles.
<b>Concentration</b>	50 µg/mL as determined by BCA
<b>Storage Buffer</b>	100 mM glycine, 25 mM Tris-HCl, pH 7.3.
<b>GENE INFORMATION</b>	
<b>Gene Name</b>	GULP1 GULP PTB domain containing engulfment adaptor 1 [ Homo sapiens (human) ]
<b>Official Symbol</b>	GULP1
<b>Synonyms</b>	GULP1; GULP, engulfment adaptor PTB domain containing 1; PTB domain-containing engulfment adapter protein 1; CED 6; CED6; GULP; engulfment adapter protein; cell death protein 6 homolog; PTB domain adapter protein CED-6; PTB domain adaptor protein CED-6; CED-6; FLJ31156;
<b>Gene ID</b>	51454
<b>mRNA Refseq</b>	NM_016315
<b>Protein Refseq</b>	NP_057399
<b>MIM</b>	608165
<b>UniProt ID</b>	Q9UBP9

 Tel: 1-631-559-9269 1-516-512-3133

 Email: [info@creative-biomart.com](mailto:info@creative-biomart.com)  Fax: 1-631-938-8127

 45-1 Ramsey Road, Shirley, NY 11967, USA

**SDS-PAGE**



 Tel: 1-631-559-9269 1-516-512-3133

 Email: [info@creative-biomart.com](mailto:info@creative-biomart.com)  Fax: 1-631-938-8127

 45-1 Ramsey Road, Shirley, NY 11967, USA