

## Recombinant Human GULP1 Protein, GST-tagged

Cat. No. GULP1-4497H Lot. No. (See product label)

### SPECIFICATION

<b>Product Overview</b>	Human GULP1 full-length ORF ( AAH01103.1, 1 a.a. - 167 a.a.) recombinant protein with GST-tag at N-terminal.
<b>Species</b>	Human
<b>Source</b>	Wheat Germ
<b>Description</b>	The prompt clearance of cells undergoing apoptosis is critical during embryonic development, normal tissue turnover, inflammation, and autoimmunity. CED6 is an evolutionarily conserved adaptor protein required for efficient engulfment of apoptotic cells by phagocytes.[supplied by OMIM
<b>Molecular Mass</b>	45.8 kDa
<b>AA Sequence</b>	MNRAFSRKKDKTWMHTPEALSKHFIPYNAKFLGSTVEVEQPKGTEVVRDAVRKLFKFA RHIKKSEGQKIPKVELQISYIGVKILEPKTKEVQHNCQLHRISFCADDKTDKRIFTFICK DSESNKHLCYVFDSEKCVSIPDVVGWVLFYKPGIVLLLALAKYLKMNFL
<b>Applications</b>	Enzyme-linked Immunoabsorbent Assay Western Blot (Recombinant protein) Antibody Production Protein Array
<b>Notes</b>	Best use within three months from the date of receipt of this protein.

 Tel: 1-631-559-9269 1-516-512-3133

 Email: [info@creative-biomart.com](mailto:info@creative-biomart.com)  Fax: 1-631-938-8127

 45-1 Ramsey Road, Shirley, NY 11967, USA

**Storage** Store at -8 centigrade. Aliquot to avoid repeated freezing and thawing.

**Storage Buffer** 50 mM Tris-HCl, 10 mM reduced Glutathione, pH=8.0 in the elution buffer.

## GENE INFORMATION

**Gene Name** GULP1 GULP, engulfment adaptor PTB domain containing 1 [ Homo sapiens ]

**Official Symbol** GULP1

**Synonyms**

GULP1; GULP, engulfment adaptor PTB domain containing 1; PTB domain-containing engulfment adapter protein 1; CED 6; CED6; GULP; engulfment adapter protein; cell death protein 6 homolog; PTB domain adapter protein CED-6; PTB domain adaptor protein CED-6; CED-6; FLJ31156;

**Gene ID** 51454

**mRNA Refseq** NM\_001252668

**Protein Refseq** NP\_001239597

**MIM** 608165

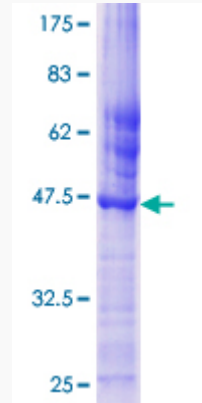
**UniProt ID** Q9UBP9

 Tel: 1-631-559-9269 1-516-512-3133

 Email: [info@creative-biomart.com](mailto:info@creative-biomart.com)  Fax: 1-631-938-8127

 45-1 Ramsey Road, Shirley, NY 11967, USA

**Quality Control  
Testing**



12.5% SDS-PAGE Stained with Coomassie Blue.

 Tel: 1-631-559-9269 1-516-512-3133

 Email: [info@creative-biomart.com](mailto:info@creative-biomart.com)  Fax: 1-631-938-8127

 45-1 Ramsey Road, Shirley, NY 11967, USA