

Recombinant Full Length Human GUSB Protein, C-Flag-tagged

Cat. No. GUSB-2155HFL Lot. No. (See product label)

SPECIFICATION

Product Overview	Recombinant Full Length Human GUSB Protein, fused to Flag-tag at C-terminus, was expressed in Mammalian cells.
Species	Human
Source	Mammalian Cells
Description	This gene encodes a hydrolase that degrades glycosaminoglycans, including heparan sulfate, dermatan sulfate, and chondroitin-4,6-sulfate. The enzyme forms a homotetramer that is localized to the lysosome. Mutations in this gene result in mucopolysaccharidosis type VII. Alternative splicing results in multiple transcript variants. There are many pseudogenes of this locus in the human genome.
Form	25 mM Tris HCl, pH 7.3, 100 mM glycine, 10% glycerol.
Molecular Mass	72.5 kDa
AA Sequence	MARGSAVAWAALGPLLWGCALGLQGGM LYPQESPSRECKELDGLWSFRADFS DN RRRGFEEQWYRRPLWE SGPTVDMPVPSSFN DISQDWRLRHFVGVVWYEREVILP ERWTQDLRTRVVL RIGSAHSYAIVWVNGVDTL EHEGGYLPFEADISNLVQVGPLPS RLRITIAINNTLPTTLPPGTIQYLTDTSKYPKGYFVQNTYFDFFN YAGLQRSVLLYTT PTTYIDDITVTT SVEQDSGLVNYQISVKGSNLFKLEVRLLDAENKVVANGTGTQGQL KVPGVSLWWPYLMHERPAYLYSLEVQLTAQTSLGPVSDFYTLPGVIRTVAVTKSQFL INGKPFYFHGVNK HEDADIRGKGFDPVLLVKDFNLLRWLGANAFRTSHYPYAEV M QMCDRYGIVVIDECPGVGLALPQFFNN VSLHHHMQVMEEVRRDKNHPAVVMWS

 Tel: 1-631-559-9269 1-516-512-3133

 Email: info@creative-biomart.com  Fax: 1-631-938-8127

 45-1 Ramsey Road, Shirley, NY 11967, USA

VANEPASHLESAGYYLKMVIAHTKSLDPSRPVTFVSNNSNYAAD KGAPYVDVICLNSY
 YSWYHDYGHLELIQLQLATQFENWYKKYQKPIIQSEYGAETIAGFHQDPPLMFTEE Y
 QKSLLQYHLGLDQKRRKYVVGELIWNFADFMTEQSPTRVLGNKKGIFTRQRQPKS
 AAFLLRERYWKIA NETRYPHSVAKSQCLENSLFT TRTRPLEQKLISEEDLAANDILD
 YKDDDDKV

Purity > 80% as determined by SDS-PAGE and Coomassie blue staining.

Stability Stable for 12 months from the date of receipt of the product under proper storage and handling conditions. Avoid repeated freeze-thaw cycles.

Storage Store at -80 centigrade.

Concentration >50 ug/mL as determined by microplate BCA method.

Preparation Recombinant protein was captured through anti-DDK affinity column followed by conventional chromatography steps.

Protein Families Druggable Genome, Transmembrane

Protein Pathways Drug metabolism - other enzymes, Glycosaminoglycan degradation, Lysosome, Metabolic pathways, Pentose and glucuronate interconversions, Porphyrin and chlorophyll metabolism, Starch and sucrose metabolism

Full Length Full L.

GENE INFORMATION

Gene Name GUSB glucuronidase beta [Homo sapiens (human)]

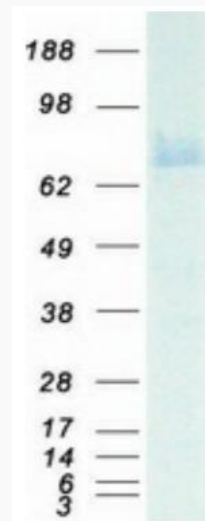
Official Symbol GUSB

 Tel: 1-631-559-9269 1-516-512-3133

 Email: info@creative-biomart.com  Fax: 1-631-938-8127

 45-1 Ramsey Road, Shirley, NY 11967, USA

Synonyms	BG; MPS7
Gene ID	2990
mRNA Refseq	NM_000181.4
Protein Refseq	NP_000172.2
MIM	611499
UniProt ID	P08236



Coomassie blue staining of purified GUSB protein.

 Tel: 1-631-559-9269 1-516-512-3133

 Email: info@creative-biomart.com  Fax: 1-631-938-8127

 45-1 Ramsey Road, Shirley, NY 11967, USA