

Recombinant Human GUSB Protein, GST-tagged

Cat. No. GUSB-4500H Lot. No. (See product label)

SPECIFICATION

Product Overview	Human GUSB full-length ORF (AAH14142.1, 22 a.a. - 651 a.a.) recombinant protein with GST-tag at N-terminal.
Species	Human
Source	Wheat Germ
Description	The GUSB gene encodes beta-glucuronidase (EC 3.2.1.31), a lysosomal hydrolase involved in the stepwise degradation of glucuronic acid-containing glycosaminoglycans (Shiple et al., 1993 [PubMed 7680524]). It is a tetrameric glycoprotein composed of identical subunits (Oshima et al., 1987 [PubMed 3468507]). The GUSB gene is mutated in mucopolysaccharidosis type VII (MPS7; MIM 253220).[supplied by OMIM
Molecular Mass	94.82 kDa
AA Sequence	GLQGGMLYPQESPSRECKELDGLWSFRADFSNRRRGFEEQWYRRPLWESGPTV DMPVPSSFNDISQDWRLRHFVGVVWYEREVILPERWTQDLRTRVVLRIGSAHSYAI VWVNGVDLTLEHEGGYLPFEADISNLVQVGPLPSRLRITIAINNTLTPTLPPGTIQYLT DTSKYPKGYFVQNTYDFFFNYAGLQRSVLLYTTPTTYIDDITVTTTSVEQDSGLVNYQI SVKGSNLFKLEVRLLDAENKVVANGTGTQGQLKVPVSLWVWVYLMHERPAYLYSL EVQLTAQTS LGPVSDFYTLPGVIRTVAVTKSQFLINGKPFYFHGVNKHEDADIRGKGF DWPLLVKDFNLLRWLGANAFRTSHYPYAEEMQMCDRYGIVVIDECPGVGLALPQF FNNVSLHHHMQVMEEVRRDKNHPAVVMWSVANEPASHLESAGYYLKMVIAHTKS

 Tel: 1-631-559-9269 1-516-512-3133

 Email: info@creative-biomart.com  Fax: 1-631-938-8127

 45-1 Ramsey Road, Shirley, NY 11967, USA

LDPSRPVTFVSNSNYAADKGAPYVDVICLNSYYSWYHDYGHLELIQLQLATQFENW
 YKKYQKPIIQSEYGAETIAGFHQDPPLMFTEEYQKSLLEQYHLGLDQKRRKYVVGELI
 WNFADFMTEQSPTRVLGNKKGIFTRQRQPKSAAFLLRERYWKIANETRYPHSVAKS
 QCLENSLFT

Applications	Enzyme-linked Immunoabsorbent Assay Western Blot (Recombinant protein) Antibody Production Protein Array
Notes	Best use within three months from the date of receipt of this protein.
Storage	Store at -8 centigrade. Aliquot to avoid repeated freezing and thawing.
Storage Buffer	50 mM Tris-HCl, 10 mM reduced Glutathione, pH=8.0 in the elution buffer.

GENE INFORMATION

Gene Name	GUSB glucuronidase, beta [Homo sapiens]
Official Symbol	GUSB
Synonyms	GUSB; glucuronidase, beta; beta-glucuronidase; beta-G1; beta-D-glucuronidase; BG; MPS7; FLJ39445;
Gene ID	2990
mRNA Refseq	NM_000181
Protein Refseq	NP_000172

 Tel: 1-631-559-9269 1-516-512-3133

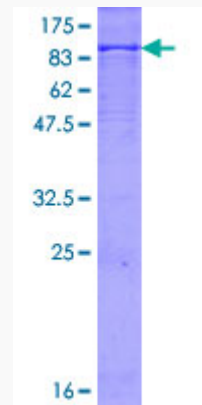
 Email: info@creative-biomart.com  Fax: 1-631-938-8127

 45-1 Ramsey Road, Shirley, NY 11967, USA

MIM 611499

UniProt ID P08236

**Quality Control
Testing**



12.5% SDS-PAGE Stained with Coomassie Blue.

 Tel: 1-631-559-9269 1-516-512-3133

 Email: info@creative-biomart.com  Fax: 1-631-938-8127

 45-1 Ramsey Road, Shirley, NY 11967, USA