

Recombinant Human GXYLT1 Protein, GST-tagged

Cat. No. GXYLT1-4986H **Lot. No.** (See product label)

SPECIFICATION

Product Overview	Human GLT8D3 full-length ORF (AAH39145.1, 1 a.a. - 409 a.a.) recombinant protein with GST-tag at N-terminal.
Species	Human
Source	Wheat Germ
Description	GXYLT1 is a xylosyltransferase (EC 2.4.2.-) that adds the first xylose to O-glucose-modified residues in the epidermal growth factor (EGF; MIM 131530) repeats of proteins such as NOTCH1 (MIM 190198) (Sethi et al., 2010 [PubMed 19940119]).[supplied by OMIM, Mar 2010]
Molecular Mass	73.2 kDa
AA Sequence	MRRYL RVV V L C V A C G F C S L L Y A F S Q L A V S L E E G T G G G G G K P Q A A V A S W L A G G G R G A V R G A G V A G P A A H P G V S D R Y S L K I Q P V E K M H L A V V A C G E R L E E T M T M L K S A I I F S I K P L Q F H I F A E D Q L H H S F K G R L D N W S F L Q T F N Y T L Y P I T F P S E N A A E W K K L F K P C A S Q R L F L P L I L K E V D S L L Y V D T D I L F L R P V D D I W S L L K K F N S T Q I A A M A P E H E E P R I G W Y N R F A R H P Y Y G K T G V N S G V M L M N M T R M R R K Y F K N D M T T V R L Q W G D I L M P L L K K Y K L N I T W G D Q D L L N I V F F H N P E S L F V F P C Q W N Y R P D H C I Y G S N C Q E A E E G G I F I L H G N R G V Y H D D K Q P A F R A V Y E A L R N C S F E D D N I R S L L K P L E L E L Q K T V H T Y C G K I Y K I F I K L A K S V R D R Y A R S P K E K
Applications	Enzyme-linked Immunoabsorbent Assay Western Blot (Recombinant protein)

 Tel: 1-631-559-9269 1-516-512-3133

 Email: info@creative-biomart.com  Fax: 1-631-938-8127

 45-1 Ramsey Road, Shirley, NY 11967, USA

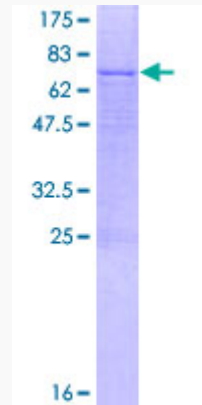
	Antibody Production Protein Array
Notes	Best use within three months from the date of receipt of this protein.
Storage	Store at -80 centigrade. Aliquot to avoid repeated freezing and thawing.
Storage Buffer	50 mM Tris-HCl, 10 mM reduced Glutathione, pH=8.0 in the elution buffer.
GENE INFORMATION	
Gene Name	GXYLT1 glucoside xylosyltransferase 1 [Homo sapiens (human)]
Official Symbol	GXYLT1
Synonyms	GXYLT1; glucoside xylosyltransferase 1; GLT8D3; glucoside xylosyltransferase 1; glycosyltransferase 8 domain containing 3; glycosyltransferase 8 domain-containing protein 3; NP_001093120.1; EC 2.4.2.n2
Gene ID	283464
mRNA Refseq	NM_001099650
Protein Refseq	NP_001093120
MIM	613321
UniProt ID	Q4G148

 Tel: 1-631-559-9269 1-516-512-3133

 Email: info@creative-biomart.com  Fax: 1-631-938-8127

 45-1 Ramsey Road, Shirley, NY 11967, USA

**Quality Control
Testing**



12.5% SDS-PAGE Stained with Coomassie Blue.

 Tel: 1-631-559-9269 1-516-512-3133

 Email: info@creative-biomart.com  Fax: 1-631-938-8127

 45-1 Ramsey Road, Shirley, NY 11967, USA