

Recombinant Human GYG1 Protein, GST-tagged

Cat. No. GYG1-4502H **Lot. No.** (See product label)

SPECIFICATION

Product Overview	Human GYG partial ORF (NP_004121, 1 a.a. - 73 a.a.) recombinant protein with GST-tag at N-terminal.
Species	Human
Source	Wheat Germ
Description	This gene encodes a member of the glycogenin family. Glycogenin is a glycosyltransferase that catalyzes the formation of a short glucose polymer from uridine diphosphate glucose in an autoglucosylation reaction. This reaction is followed by elongation and branching of the polymer, catalyzed by glycogen synthase and branching enzyme, to form glycogen. This gene is expressed in muscle and other tissues. Mutations in this gene result in glycogen storage disease XV. This gene has pseudogenes on chromosomes 1, 8 and 13 respectively. Alternatively spliced transcript variants encoding different isoforms have been identified.[provided by RefSeq, Sep 2010]
Molecular Mass	33.77 kDa
AA Sequence	MTDQAFVTLTTNDAYAKGALVLGSSLKQHRTRRLVVLATPQVSDSMRKVLETVFD EVIMVDVLDSGDSAHLT
Applications	Enzyme-linked Immunoabsorbent Assay Western Blot (Recombinant protein) Antibody Production

 Tel: 1-631-559-9269 1-516-512-3133

 Email: info@creative-biomart.com  Fax: 1-631-938-8127

 45-1 Ramsey Road, Shirley, NY 11967, USA

Protein Array

Notes	Best use within three months from the date of receipt of this protein.
Storage	Store at -8 centigrade. Aliquot to avoid repeated freezing and thawing.
Storage Buffer	50 mM Tris-HCl, 10 mM reduced Glutathione, pH=8.0 in the elution buffer.

GENE INFORMATION

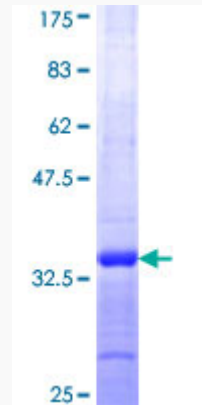
Gene Name	GYG1 glycogenin 1 [Homo sapiens]
Official Symbol	GYG1
Synonyms	GYG1; glycogenin 1; glycogenin , GYG; glycogenin-1; GN-1; GYG; GSD15;
Gene ID	2992
mRNA Refseq	NM_001184720
Protein Refseq	NP_001171649
MIM	603942
UniProt ID	P46976

 Tel: 1-631-559-9269 1-516-512-3133

 Email: info@creative-biomart.com  Fax: 1-631-938-8127

 45-1 Ramsey Road, Shirley, NY 11967, USA

**Quality Control
Testing**



12.5% SDS-PAGE Stained with Coomassie Blue.

 Tel: 1-631-559-9269 1-516-512-3133

 Email: info@creative-biomart.com  Fax: 1-631-938-8127

 45-1 Ramsey Road, Shirley, NY 11967, USA