

Recombinant Human GYG2 Protein, GST-tagged

Cat. No. GYG2-4504H Lot. No. (See product label)

SPECIFICATION

Product Overview	Human GYG2 full-length ORF (AAH23152.1, 1 a.a. - 470 a.a.) recombinant protein with GST-tag at N-terminal.
Species	Human
Source	Wheat Germ
Description	This gene encodes a member of the the glycogenin family. Glycogenin is a self-glucosylating protein involved in the initiation reactions of glycogen biosynthesis. A gene on chromosome 3 encodes the muscle glycogenin and this X-linked gene encodes the glycogenin mainly present in liver; both are involved in blood glucose homeostasis. This gene has a short version on chromosome Y, which is 3' truncated and can not make a functional protein. Multiple alternatively spliced transcript variants encoding different isoforms have been identified.[provided by RefSeq, May 2010]
Molecular Mass	78.4 kDa
AA Sequence	MSVTDQAFVTLATNDIYCQGALVVGQSLRRHRLTRKLVVLITPQVSSLLRVILSKVFD EVIEVNLIDSADYIHLAFLKRPELGLTLTKLHCWTLTHYSKCVFLDADTLVLSNVDELFL DRGEFSAAPDPGWPDCFNQGVFVQPSLHTHKLLLQHAMEHGSDGADQGLLNSF FRNWSTTDIHKHLPFIYNLSSNTMYTYSAPAFKQFGSSAKVVHFLGSMKPWNYKYNP QSGSVLEQGSVSSSQHQAFLHLWWTVYQNNVLPYKSVQAGEARASPGHTLCRS DVGGPCADSASGVGEPENSTPSAGVPCANSPLGNSQPAQGLPEPTQIVDETLSP EGRRSEDMIACPETETPAVITCDPLSQPSPQPADFTETETILQPANKVESVSSEETFE

 Tel: 1-631-559-9269 1-516-512-3133

 Email: info@creative-biomart.com  Fax: 1-631-938-8127

 45-1 Ramsey Road, Shirley, NY 11967, USA

PSQELPAEALRDPSLQDALEVDLAVSVSQISIEEKVKELSPEEERRKWEEGRIDYMG
KDAFARIQEKLDRFLQ

Applications	<p>Enzyme-linked Immunoabsorbent Assay</p> <p>Western Blot (Recombinant protein)</p> <p>Antibody Production</p> <p>Protein Array</p>
Notes	Best use within three months from the date of receipt of this protein.
Storage	Store at -8 centigrade. Aliquot to avoid repeated freezing and thawing.
Storage Buffer	50 mM Tris-HCl, 10 mM reduced Glutathione, pH=8.0 in the elution buffer.

GENE INFORMATION

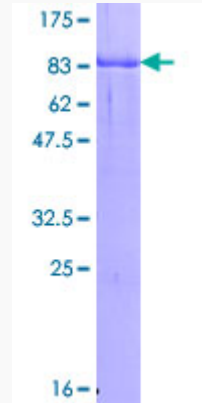
Gene Name	GYG2 glycogenin 2 [Homo sapiens]
Official Symbol	GYG2
Synonyms	GYG2; glycogenin 2; glycogenin-2; GN 2; GN2; GN-2;
Gene ID	8908
mRNA Refseq	NM_001079855
Protein Refseq	NP_001073324
MIM	300198
UniProt ID	O15488

 Tel: 1-631-559-9269 1-516-512-3133

 Email: info@creative-biomart.com  Fax: 1-631-938-8127

 45-1 Ramsey Road, Shirley, NY 11967, USA

**Quality Control
Testing**



12.5% SDS-PAGE Stained with Coomassie Blue.

 Tel: 1-631-559-9269 1-516-512-3133

 Email: info@creative-biomart.com  Fax: 1-631-938-8127

 45-1 Ramsey Road, Shirley, NY 11967, USA