

Recombinant Human GYG2 Protein, Myc/DDK-tagged, C13 and N15-labeled

Cat. No. GYG2-6037H **Lot. No.** (See product label)

SPECIFICATION

Product Overview	GYG2 MS Standard C13 and N15-labeled recombinant protein (NP_001073324) with a C-terminal MYC/DDK tag, was expressed in HEK293 cells.
Species	Human
Source	HEK293
Description	This gene encodes a member of the the glycogenin family. Glycogenin is a self-glucosylating protein involved in the initiation reactions of glycogen biosynthesis. A gene on chromosome 3 encodes the muscle glycogenin and this X-linked gene encodes the glycogenin mainly present in liver; both are involved in blood glucose homeostasis. This gene has a short version on chromosome Y, which is 3' truncated and can not make a functional protein. Multiple alternatively spliced transcript variants encoding different isoforms have been identified.
Molecular Mass	52 kDa
AA Sequence	MSVTDQAFVTLATNDIYCQGALVVGQSLRRHRLTRKLVVLITPQVSSLLRVILSKVFD EVIEVNLIDSADYIHLAFLKRPELGLTLTKLHCWTLTHYSKCVFLDADTLVLSNVDEL DRGEFSAAPDPGWPDCFNQSVFVFQPSLHTHKLLLQHAMEHGSFDGADQGLLNSF FRNWSTTDIHKHLPFIYNLSSNTMYTYSPAFKQFGSSAKVVHFLGSMKPWNYKYNP QSGSVLEQGSVSSSQHQAFLHLWWTVYQNNVLPYKSVQAGEARASPGHTLCRS DVGGPCADSASGVGEPENSTPSAGVPCANSPLGNSNQAQGLPEPTQIVDETLSP

 Tel: 1-631-559-9269 1-516-512-3133

 Email: info@creative-biomart.com  Fax: 1-631-938-8127

 45-1 Ramsey Road, Shirley, NY 11967, USA

EGRRSEDMIACPETETPAVITCDPLSQPSPQPADFTETETILQPANKVESVSSEETFE
 PSQELPAEALRDPSLQDALEVDLAVSVSQISIEEKVKELSPEEERRKWEEGRIDYMG
 KDAFARIQEKLDRFLQSGPTRTRPLEQKLISEEDLAANDILDYKDDDDKV

Purity > 80% as determined by SDS-PAGE and Coomassie blue staining

Stability Stable for 3 months from receipt of products under proper storage and handling conditions.

Storage Store at -80 centigrade. Avoid repeated freeze-thaw cycles.

Concentration 50 µg/mL as determined by BCA

Storage Buffer 100 mM glycine, 25 mM Tris-HCl, pH 7.3.

GENE INFORMATION

Gene Name [GYG2 glycogenin 2 \[Homo sapiens \(human\) \]](#)

Official Symbol [GYG2](#)

Synonyms GYG2; glycogenin 2; glycogenin-2; GN 2; GN2; GN-2;

Gene ID [8908](#)

mRNA Refseq [NM_001079855](#)

Protein Refseq [NP_001073324](#)

MIM [300198](#)

 Tel: 1-631-559-9269 1-516-512-3133

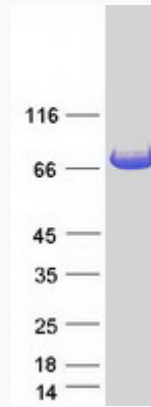
 Email: info@creative-biomart.com  Fax: 1-631-938-8127

 45-1 Ramsey Road, Shirley, NY 11967, USA

UniProt ID

O15488

SDS-PAGE



 Tel: 1-631-559-9269 1-516-512-3133

 Email: info@creative-biomart.com  Fax: 1-631-938-8127

 45-1 Ramsey Road, Shirley, NY 11967, USA