

Recombinant Human GYLTL1B protein, GST-tagged

Cat. No. GYLTL1B-8966H **Lot. No.** (See product label)

SPECIFICATION

Product Overview	Recombinant Human GYLTL1B protein(414-721 aa), fused with N-terminal GST tag, was expressed in E.coli.
Species	Human
Source	E.coli
ProteinLength	414-721 aa
Form	The purified protein was lyophilized from sterile phosphate-buffered saline (PBS: 58 mM Na ₂ HPO ₄ , 17 mM NaH ₂ PO ₄ , 68 mM NaCl, pH 8.0). Prior to lyophilization, 5% (w/v) trehalose and 5% (w/v) mannitol were incorporated as cryoprotective excipients.
AASequence	RVHVTFLPHEPPPPRPHDVTLVLAQLSMDRLQMLEALCRHWPGPMSLALYLTDAAEQ QFLHFVEASPVLAARQDVAYHVYVYREGPLYPVNQLRNVALAQUALTPYVFLSDIDFLP AYSLYDYLRASIEQLGLGSRKAAALVVPFETLRYRFSFPHSKVELLALLDAGTLYTF RYHEWPRGHAPTDYARWREAQAPYRVQWAANYEPYVVVPRDCPRYDPRFVGF WNKVAHIVELDAQEYELLVLPEAFTIHLPHAPSLDISRFRSSPTYRDCLQALKDEFHQ DLSRHHGAAALKYLPALQQPQSPARG
Purity	85%, by SDS-PAGE with Coomassie Brilliant Blue staining.
Storage	Store at 2-8°C for 1-2 weeks. Aliquot and store at -20°C to -80°C for up to 3 months, reconstitution with sterile water and addition of an equal volume of glycerol. Avoid

 Tel: 1-631-559-9269 1-516-512-3133

 Email: info@creative-biomart.com  Fax: 1-631-938-8127

 45-1 Ramsey Road, Shirley, NY 11967, USA

repeat freeze-thaw cycles.

Reconstitution

Dissolve the product in 200 µl sterile water to achieve a working concentration of 0.25 g/µl. If experimental compatibility allows, mix the aqueous solution with an equal volume of glycerol (1:1 ratio) after initial reconstitution.

GENE INFORMATION

Gene Name [GYLTL1B glycosyltransferase-like 1B \[Homo sapiens \]](#)

Official Symbol [GYLTL1B](#)

Synonyms

glycosyltransferase-like 1B; 16522; Ensembl:ENSG00000165905; FLJ35207; glycosyltransferase-like protein LARGE2;like-glycosyltransferase 2;ortholog of mouse glycosyltransferase-like 1B; LARGE2; PP5656

Gene ID [120071](#)

mRNA Refseq [NM_152312.3](#)

Protein Refseq [NP_689525.3](#)

MIM [609709](#)

UniProt ID [B3KP69](#)

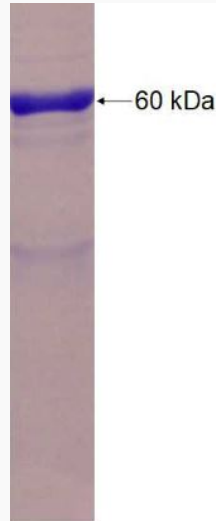
 Tel: 1-631-559-9269 1-516-512-3133

 Email: info@creative-biomart.com  Fax: 1-631-938-8127

 45-1 Ramsey Road, Shirley, NY 11967, USA



SDS-PAGE



Tel: 1-631-559-9269 1-516-512-3133

Email: info@creative-biomart.com Fax: 1-631-938-8127

45-1 Ramsey Road, Shirley, NY 11967, USA