

## Recombinant Human GYPA Protein (Ser20-Gln150), N-His tagged

Cat. No. GYPA-1345H Lot. No. (See product label)

### SPECIFICATION

<b>Product Overview</b>	Recombinant Human CD235a/GYPA (Ser20-Gln150) fused with the N-His tag was expressed in E. coli.
<b>Species</b>	Human
<b>Source</b>	E.coli
<b>ProteinLength</b>	Ser20-Gln150
<b>Form</b>	Lyophilized powder/frozen liquid
<b>Molecular Mass</b>	16.56 kDa
<b>Purity</b>	>90% as determined by SDS-PAGE.
<b>Notes</b>	For research use only.
<b>Storage</b>	Use a manual defrost freezer and avoid repeated freeze thaw cycles. Store at 2 to 8 centigrade for one week. Store at -20 to -80 centigrade for twelve months from the date of receipt.
<b>Storage Buffer</b>	0.01M PBS, pH 7.4, 0.02% NLS
<b>Reconstitution</b>	Reconstitute in sterile water for a stock solution.

 Tel: 1-631-559-9269 1-516-512-3133

 Email: [info@creative-biomart.com](mailto:info@creative-biomart.com)  Fax: 1-631-938-8127

 45-1 Ramsey Road, Shirley, NY 11967, USA

**Shipping** They are shipped out with dry ice/blue ice unless customers require otherwise.

## GENE INFORMATION

**Gene Name** [GYPA glycophorin A \(MNS blood group\) \[ Homo sapiens \(human\) \]](#)

**Official Symbol** [GYPA](#)

**Synonyms** GYPA; glycophorin A (MNS blood group); glycophorin A (includes MN blood group), glycophorin A (MN blood group), MNS; glycophorin-A; CD235a; GPA; MN; glycophorin Mil; glycophorin MiV; glycophorin SAT; glycophorin Erik; glycophorin A, GPA; MN sialoglycoprotein; glycophorin Sta type C; sialoglycoprotein alpha; Mi.V glycoprotein (24 AA); glycophorin A (MN blood group); recombinant glycophorin A-B Miltenberger-DR; erythroid-lineage-specific membrane sialoglycoprotein; MNS; GPSAT; PAS-2; GPErik; HGpMiV; HGpMiXI; HGpSta (C);

**Gene ID** [2993](#)

**mRNA Refseq** [NM\\_002099](#)

**Protein Refseq** [NP\\_002090](#)

**MIM** [617922](#)

**UniProt ID** [P02724](#)

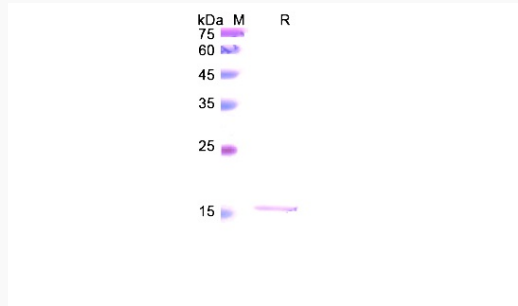
 Tel: 1-631-559-9269 1-516-512-3133

 Email: [info@creative-biomart.com](mailto:info@creative-biomart.com)  Fax: 1-631-938-8127

 45-1 Ramsey Road, Shirley, NY 11967, USA



SDS-PAGE



Tel: 1-631-559-9269 1-516-512-3133

Email: [info@creative-biomart.com](mailto:info@creative-biomart.com) Fax: 1-631-938-8127

45-1 Ramsey Road, Shirley, NY 11967, USA