

## Recombinant Human GYPA Protein (20-91 aa), His-tagged

Cat. No. GYPA-1408H Lot. No. (See product label)

### SPECIFICATION

<b>Product Overview</b>	Recombinant Human GYPA Protein (20-91 aa) is produced by Yeast expression system. This protein is fused with a 6xHis tag at the N-terminal. Research Area: Cardiovascular. Protein Description: Partial.
<b>Species</b>	Human
<b>Source</b>	Yeast
<b>ProteinLength</b>	20-91 aa
<b>Description</b>	Glycophorin A is the major intrinsic mbrane protein of the erythrocyte. The N-terminal glycosylated segment, which lies outside the erythrocyte mbrane, has MN blood group receptors. Appears to be important for the function of SLC4A1 and is required for high activity of SLC4A1. May be involved in translocation of SLC4A1 to the plasma mbrane. Is a receptor for influenza virus. Is a receptor for Plasmodium falciparum erythrocyte-binding antigen 175 (EBA-175); binding of EBA-175 is dependent on sialic acid residues of the O-linked glycans. Appears to be a receptor for Hepatitis A virus (HAV).
<b>Form</b>	Tris-based buffer,50% glycerol
<b>Molecular Mass</b>	9.9 kDa
<b>AA Sequence</b>	LSTTEVAMHTSTSSSVTKSYISSQTNDTHKRDTYAATPRAHEVSEISVRTVYPPEEET GERVQLAHHFSEPE

 Tel: 1-631-559-9269 1-516-512-3133

 Email: [info@creative-biomart.com](mailto:info@creative-biomart.com)  Fax: 1-631-938-8127

 45-1 Ramsey Road, Shirley, NY 11967, USA

<b>Purity</b>	> 90% as determined by SDS-PAGE.
<b>Notes</b>	Repeated freezing and thawing is not recommended. Store working aliquots at 4 centigrade for up to one week.
<b>Storage</b>	The shelf life is related to many factors, storage state, buffer ingredients, storage temperature and the stability of the protein itself. Generally, the shelf life of liquid form is 6 months at -20 centigrade/-80 centigrade. The shelf life of lyophilized form is 12 months at -20 centigrade/-80 centigrade.
<b>Concentration</b>	A hardcopy of COA with reconstitution instruction is sent along with the products.

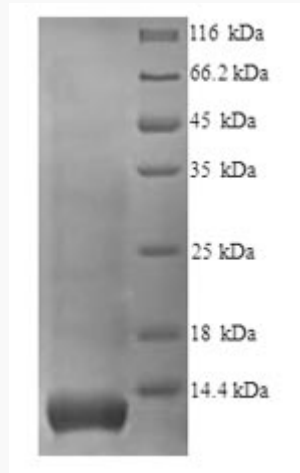
## GENE INFORMATION

<b>Gene Name</b>	GYPA glycophorin A (MNS blood group) [ Homo sapiens ]
<b>Official Symbol</b>	GYPA
<b>Synonyms</b>	GYPA; CD235a; GPA; MN; MNS; GPSAT; PAS-2; GPERik; HGpMiV; HGpMiXI; HGpSta(C);
<b>Gene ID</b>	2993
<b>mRNA Refseq</b>	NM_002099
<b>Protein Refseq</b>	NP_002090
<b>UniProt ID</b>	A0A0C4DFT7

 Tel: 1-631-559-9269 1-516-512-3133

 Email: [info@creative-biomart.com](mailto:info@creative-biomart.com)  Fax: 1-631-938-8127

 45-1 Ramsey Road, Shirley, NY 11967, USA



(Tris-Glycine gel) Discontinuous SDS-PAGE (reduced) with 5% enrichment gel and 15% separation gel.

 Tel: 1-631-559-9269 1-516-512-3133

 Email: [info@creative-biomart.com](mailto:info@creative-biomart.com)  Fax: 1-631-938-8127

 45-1 Ramsey Road, Shirley, NY 11967, USA