

Recombinant Human GYPA protein, hFc-tagged

Cat. No. GYPA-3564H Lot. No. (See product label)

SPECIFICATION

Product Overview	Recombinant Human GYPA protein(P02724-1)(Ser20-Glu91), fused with C-terminal hFc tag, was expressed in HEK293.
Species	Human
Source	HEK293
ProteinLength	Ser20-Glu91
Tag	C-hFc
Form	Lyophilized from 0.22µm filtered solution in PBS (pH 7.4). Normally 5% trehalose is added as protectant before lyophilization.
Bio-activity	Anti-GPA Antibody immobilized on CM5 Chip can bind Human GPA, hFc Tag with an affinity constant of 0.72 uM as determined in SPR assay (Biacore T200).
Molecular Mass	The protein has a predicted MW of 34.7 kDa. Due to glycosylation, the protein migrates to 45-70 kDa based on Tris-Bis PAGE result.
Endotoxin	Less than 1EU per µg by the LAL method.
Purity	> 95% as determined by Tris-Bis PAGE;> 95% as determined by HPLC
Storage	Reconstituted protein stable at -80°C for 12 months, 4°C for 1 week. Use a manual

 Tel: 1-631-559-9269 1-516-512-3133

 Email: info@creative-biomart.com  Fax: 1-631-938-8127

 45-1 Ramsey Road, Shirley, NY 11967, USA

defrost freezer and avoid repeated freeze-thaw cycles.

Reconstitution

Centrifuge tubes before opening. Reconstituting to a concentration more than 100 µg/ml is recommended. Dissolve the lyophilized protein in distilled water.

GENE INFORMATION

Gene Name

GYPA glycophorin A (MNS blood group) [Homo sapiens]

Official Symbol

GYPA

Synonyms

GYPA; glycophorin A (MNS blood group); glycophorin A (includes MN blood group) , glycophorin A (MN blood group) , MNS; glycophorin-A; CD235a; GPA; MN; glycophorin MiI; glycophorin MiV; glycophorin SAT; glycophorin Erik; glycophorin A, GPA; MN sialoglycoprotein; glycophorin Sta type C; sialoglycoprotein alpha; Mi.V glycoprotein (24 AA); glycophorin A (MN blood group); recombinant glycophorin A-B Miltenberger-DR; erythroid-lineage-specific membrane sialoglycoprotein; MNS; GPSAT; PAS-2; GPErik; HGpMiV; HGpMiXI; HGpSta(C);

Gene ID

2993

mRNA Refseq

NM_002099

Protein Refseq

NP_002090

UniProt ID

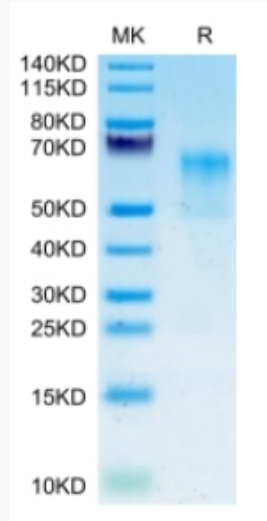
P02724

 Tel: 1-631-559-9269 1-516-512-3133

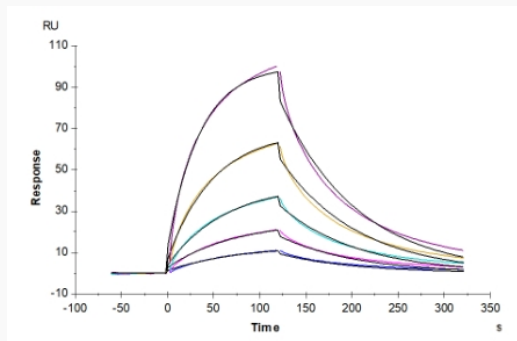
 Email: info@creative-biomart.com  Fax: 1-631-938-8127

 45-1 Ramsey Road, Shirley, NY 11967, USA

Tris-Bis PAGE



SPR Data



 Tel: 1-631-559-9269 1-516-512-3133

 Email: info@creative-biomart.com  Fax: 1-631-938-8127

 45-1 Ramsey Road, Shirley, NY 11967, USA