

Recombinant Mouse GYPA protein, His/Fc-tagged

Cat. No. GYPA-396M **Lot. No.** (See product label)

SPECIFICATION

Product Overview	Recombinant Mouse GYPA protein (Met1-Val108), fused to human IgG1 Fc tag at N-terminus and His tag at C-terminus, was expressed in human 293 cells (HEK293).
Species	Mouse
Source	HEK293
ProteinLength	108
Description	Glycophorin-A, a member of the glycophorin-A family, is also known as CD235a and Gypa, which is heavily glycosylated on serine and threonine residues at the N-terminal extracellular domain. CD235a, a single-pass type III membrane protein, is the major intrinsic membrane sialoglycoprotein of the erythrocyte. Also, CD235a appears to be important for the function of SLC4A1 and is required for high activity of SLC4A1. Furthermore, CD235a may be involved in translocation of SLC4A1 to the plasma membrane.
Form	Lyophilized from 0.22 um filtered solution in 50 mM Tris, 100 mM Glycine, pH7.5, 10% trehalose.
Molecular Mass	The protein has a calculated MW of 39.6 kDa. The protein migrates as 60-66 kDa under reducing (R) condition (SDS-PAGE) due to glycosylation.
Endotoxin	Less than 1.0 EU per ug by the LAL method.

 Tel: 1-631-559-9269 1-516-512-3133

 Email: info@creative-biomart.com  Fax: 1-631-938-8127

 45-1 Ramsey Road, Shirley, NY 11967, USA

Purity	>90% as determined by SDS-PAGE.
Storage	<p>For long term storage, the product should be stored at lyophilized state at -20 centigrade or lower.</p> <p>Please avoid repeated freeze-thaw cycles.</p> <p>This product is stable after storage at:</p> <p>-20 centigrade to -70 centigrade for 12 months in lyophilized state; -70 centigrade for 3 months under sterile conditions after reconstitution.</p>
Reconstitution	It is recommended that sterile water be added to the vial to prepare a stock solution of 0.2 ug/ul. Centrifuge the vial at 4°C before opening to recover the entire contents.

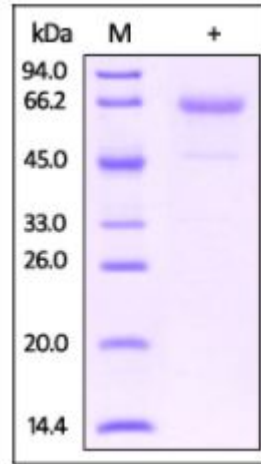
GENE INFORMATION

Gene Name	GYPA
Official Symbol	GYPA
Synonyms	GYPA; glycophorin A; glycophorin-A; GPA; CD235a; AI853584
Gene ID	14934
mRNA Refseq	NM_010369
Protein Refseq	NP_034499
UniProt ID	P14220

 Tel: 1-631-559-9269 1-516-512-3133

 Email: info@creative-biomart.com  Fax: 1-631-938-8127

 45-1 Ramsey Road, Shirley, NY 11967, USA

SDS-PAGE of GYPA-396M

Mouse CD235a, His Tag, Fc Tag on SDS-PAGE under reducing (R) condition. The gel was stained overnight with Coomassie Blue. The purity of the protein is greater than 90%.

 Tel: 1-631-559-9269 1-516-512-3133

 Email: info@creative-biomart.com  Fax: 1-631-938-8127

 45-1 Ramsey Road, Shirley, NY 11967, USA